

# Agra



Custom shape and 36 custom colors also available exclusively for Trade Clients. Please refer to our website: [armadillo-co.com/us/trade/custom-color](http://armadillo-co.com/us/trade/custom-color)

### Colors & codes

Midnight AGR-BL001		Juniper AGR-GN001	
Marlin AGR-BL003		Duchess AGR-PK003	
Moonstone AGR-GN006		Artichoke AGR-GN003	
Kingfisher AGR-BL004		Burnt Umber AGR-RD002	
Byzantine AGR-YL001		Gunmetal AGR-BL002	
Pearl AGR-GY003		Haze AGR-BE001	

### Imperial

8' x 10'  
9' x 12'  
10' x 14'\*

### Metric

2.4 x 3 m  
2.7 x 3.6 m  
3 x 4.2 m\*

### Notes

Handmade in India under Fair Trade standards. Custom size available. Rug pad available. Max. size 29'6" x 49'3" (9 x 15 m). Agra has passed for certified Fire Propagation Properties (AS 2111.18).

Length of rug does not include tassels (¼" or 20 mm each end).

\* 10' x 14' only available in Agra, Juniper, Midnight, Marlin, Pearl and Haze.

### Fiber & construction

Fiber: **Wool**

Construction: **Hand knotted**

End finish: **Cotton tassels**

Height: **5/8" (15 mm)**

Total Thickness Means AS/NZS 2111.5 -1996

Knot count: **62 /inch<sup>2</sup>**

### Composition

100% Wool Pile / 100% Cotton Warp & Weft

### Color fastness

ISO 105-B02 2016

### Suitability

Indoor

Residential

Light commercial project

### Areas of use

Living

Dining

Bedroom

Hallway

**Care instructions** — Vacuum your rug regularly as shedding of loose fibers will occur with a new rug (do not use a rotating or brush head on the vacuum cleaner).

Promptly clean spills by blotting with a clean, undyed cloth. Do not dry clean or use harsh chemicals that could damage or fade your rug. Never fold your rug for storage or keep in an airtight bag. Avoid direct or continuous exposure to sunlight and rotate your rug to promote even wear. Professional cleaning is recommended on occasion to ensure the long life of your rug.

Please refer to our website for more information: [armadillo-co.com](http://armadillo-co.com)

**Delivery time for custom sizes and colors** — 16 – 20 weeks.

**Sizing** — Due to our rugs being a handmade product, a 3% size variation is possible. Variations in pile height and total thickness of 1/32" - 1/8" (1-3 mm) are considered acceptable.

**Color** — Every effort is made to ensure there is minimal color variation, however some can be expected as our rugs are made primarily from natural fibers. All cut pile rugs will exhibit light and dark patches over time, as the fibers bend and reflect the light differently. This rug is designed to display gentle linear variations across the background. Placing rugs in direct and

continuous sunlight will cause them to fade and is not a manufacturing fault.

**Shedding** — Natural fiber rugs will initially shed loose fibers, which can be hastened by regular vacuuming.

**Pop-ups** — Due to the nature of weaving, there will be short fibers popping up while the rug settles. These can be trimmed by hand with household scissors.

**Stock rugs** — From time to time a product will be out of stock. Armadillo will endeavour to ensure items are back in stock within 4 – 6 weeks.

**Underlay/Rug pads** — We recommend using an underlay/ rug pad with all of our products.

# Babylon



Colors & codes

Sterling & Bronze  
BAB-ST/BZ



Sterling & Graphite  
BAB-ST/GP



Imperial

Custom only

Metric

Custom only

Notes

Handmade in India under Fair Trade standards. Custom size available. Underlay available. Underlay available. Max. size 19'8" x 49'3" (6 x 15 m).

Length of rug does not include tassels (3/4" or 20 mm each end).

Fiber & construction

Fiber: **Wool**

Construction: **Hand knotted**

End finish: **Cotton tassels**

Height: **3/8" (10 mm)**

Knot count: **100 /inch<sup>2</sup>**

Composition

100% Wool Pile / 100% Cotton Warp & Weft

Suitability

Indoor

Residential

Light commercial project

Areas of use

Living

Dining

Bedroom

Hallway

**Care instructions** — Vacuum your rug regularly as shedding of loose fibers will occur with a new rug (do not use a rotating or brush head on the vacuum cleaner).

Promptly clean spills by blotting with a clean, undyed cloth. Do not dry clean or use harsh chemicals that could damage or fade your rug. Never fold your rug for storage or keep in an airtight bag. Avoid direct or continuous exposure to sunlight and rotate your rug to promote even wear. Professional cleaning is recommended on occasion to ensure the long life of your rug.

Please refer to our website for more information: [armadillo-co.com](http://armadillo-co.com)

**Delivery time for custom sizes and colors** — 16 – 20 weeks.

**Sizing** — Due to our rugs being a handmade product, a 3% size variation is possible. Variations in pile height and total thickness of 1/2" - 3/8" (1-3 mm) are considered acceptable.

**Color** — Every effort is made to ensure there is minimal color variation, however some can be expected as our rugs are made primarily from natural fibers. All cut pile rugs will exhibit light and dark patches over time, as the fibers bend and reflect the light differently. This rug is designed to display gentle linear variations across the background. Placing rugs in direct and

continuous sunlight will cause them to fade and is not a manufacturing fault.

**Shedding** — Natural fiber rugs will initially shed loose fibers, which can be hastened by regular vacuuming.

**Pop-ups** — Due to the nature of weaving, there will be short fibers popping up while the rug settles. These can be trimmed by hand with household scissors.

**Stock rugs** — From time to time a product will be out of stock. Armadillo will endeavour to ensure items are back in stock within 4 – 6 weeks.

**Underlay/Rug pads** — We recommend using an underlay/rug pad with all of our products.

# Corsica



Colors & codes

Agave  
COR-AGA



Paperbark  
COR-PBK



Capri  
COR-CAP



Indigo  
COR-IND



Saltbush  
COR-STB



Imperial

8' x 10'

9' x 12'

10' x 14'

Metric

2.4 x 3 m

2.7 x 3.6 m

3 x 4.2 m

Notes

Handmade in India under Fair Trade standards. Custom size available. Underlay available. Max. size 19'8" x 32'10" (6 x 10 m).

Length of rug does not include tassels ¾" (20 mm) each end.

Fiber & construction

Fiber: **Wool and linen**

Construction: **Hand knotted**

End finish: **Cotton tassels**

Height: **½" (12 mm)**

Composition

55% Linen 45% Wool Pile / 100% Cotton Warp

Suitability

Indoor

Residential

Hall Runners

Areas of use

Living

Dining

Bedroom

**Care instructions** — Vacuum your rug regularly as shedding of loose fibers will occur with a new rug (do not use a rotating or brush head on the vacuum cleaner).

Promptly clean spills by blotting with a clean, undyed cloth. Do not dry clean or use harsh chemicals that could damage or fade your rug. Never fold your rug for storage or keep in an airtight bag. Avoid direct or continuous exposure to sunlight and rotate your rug to promote even wear. Professional cleaning is recommended on occasion to ensure the long life of your rug.

Please refer to our website for more information: [armadillo-co.com](http://armadillo-co.com)

**Delivery time for custom sizes** — 20-24 weeks.

**Sizing** — Due to our rugs being a handmade product, a 3% size variation is possible. Variations in pile height and total thickness of ½" - ⅜" (1-3 mm) are considered acceptable.

**Color** — Every effort is made to ensure there is minimal color variation, however some can be expected as our rugs are made primarily from natural fibers. Placing rugs in direct and continuous sunlight will cause them to fade and is not a manufacturing fault. Please note that the colors are indicative only and true colors are best matched to the samples before ordering.

**Shedding** — Natural fiber rugs will initially shed loose fibers, which can be hastened by regular vacuuming.

**Pop-ups** — Due to the nature of weaving, there will be short fibers popping up while the rug settles. These can be trimmed by hand with household scissors.

**Stock rugs** — From time to time a product will be out of stock. Armadillo will endeavour to ensure items are back in stock within 4 – 6 weeks.

**Underlay/Rug pads** — We recommend using an underlay/ rug pad with all of our products.

# Eden



Colors & codes

Abalone EDN-ABA		Chestnut EDN-CHE	
Nougat EDN-NOU		Granada EDN-GRA	
Citrine EDN-CTR		Verona EDN-VER	

Imperial

Metric

8' x 10'	2.4 x 3 m
9' x 12'	2.7 x 3.6 m
10' x 14'	3 x 4.2 m

Notes

Handmade in India under Fair Trade standards. Custom size available. Underlay available. Max. size 19'8" x 32'10" (6 x 10 m).

Length of rug does not include tassels 1 3/4" (30 mm) each end.

Fiber & construction

Fiber: **Wool**  
 Construction: **Hand knotted**  
 End finish: **Cotton tassels**  
 Height: **1/2" (12 mm)**

Composition

100% Wool Pile / 100% Cotton Warp

Suitability

Indoor  
 Residential  
 Hall Runners

Areas of use

Living  
 Dining  
 Bedroom

**Care instructions** — Vacuum your rug regularly as shedding of loose fibers will occur with a new rug (do not use a rotating or brush head on the vacuum cleaner).

Promptly clean spills by blotting with a clean, undyed cloth. Do not dry clean or use harsh chemicals that could damage or fade your rug. Never fold your rug for storage or keep in an airtight bag. Avoid direct or continuous exposure to sunlight and rotate your rug to promote even wear. Professional cleaning is recommended on occasion to ensure the long life of your rug.

Please refer to our website for more information: [armadillo-co.com](http://armadillo-co.com).

**Delivery time for custom sizes** — 20-24 weeks.

**Sizing** — Due to our rugs being a handmade product, a 3% size variation is possible. Variations in pile height and total thickness of 1/2" - 1/8" (1-3 mm) are considered acceptable.

**Color** — Every effort is made to ensure there is minimal color variation, however some can be expected as our rugs are made primarily from natural fibers. Placing rugs in direct and continuous sunlight will cause them to fade and is not a manufacturing fault. Please note that the colors are indicative only and true colors are best matched to the samples before ordering.

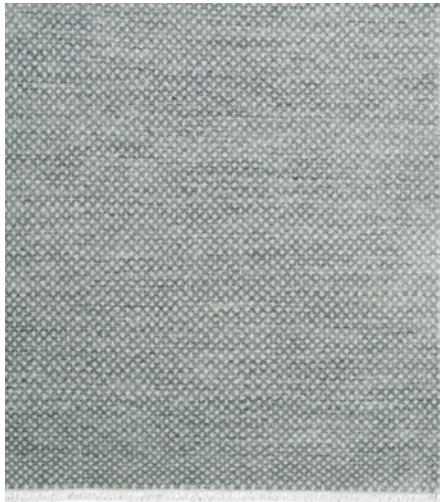
**Shedding** — Natural fiber rugs will initially shed loose fibers, which can be hastened by regular vacuuming.

**Pop-ups** — Due to the nature of weaving, there will be short fibers popping up while the rug settles. These can be trimmed by hand with household scissors.

**Stock rugs** — From time to time a product will be out of stock. Armadillo will endeavour to ensure items are back in stock within 4 - 6 weeks.

**Underlay/Rug pads** — We recommend using an underlay/ rug pad with all of our products.

# Leila



Colors & codes

Graphite & Sterling  
LEI-GP/ST



Opal & Ivory  
LEI-OP/IV



Imperial

Metric

Custom only

Custom only

Notes

Handmade in India under Fair Trade standards. Custom size available. Underlay available. Underlay available. Max. size 19'8" x 49'3" (6 x 15 m).

Length of rug does not include tassels (3/4" or 20 mm each end).

Fiber & construction

Fiber: **Wool**

Construction: **Hand knotted**

End finish: **Cotton tassels**

Height: **3/8" (10 mm)**

Knot count: **100 /inch<sup>2</sup>**

Composition

100% Wool Pile / 100% Cotton Warp & Weft

Suitability

Indoor

Residential

Light commercial project

Areas of use

Living

Dining

Bedroom

Hallway

**Care instructions** — Vacuum your rug regularly as shedding of loose fibers will occur with a new rug (do not use a rotating or brush head on the vacuum cleaner).

Promptly clean spills by blotting with a clean, undyed cloth. Do not dry clean or use harsh chemicals that could damage or fade your rug. Never fold your rug for storage or keep in an airtight bag. Avoid direct or continuous exposure to sunlight and rotate your rug to promote even wear. Professional cleaning is recommended on occasion to ensure the long life of your rug.

Please refer to our website for more information: [armadillo-co.com](http://armadillo-co.com)

**Delivery time for custom sizes and colors** — 16 – 20 weeks.

**Sizing** — Due to our rugs being a handmade product, a 3% size variation is possible. Variations in pile height and total thickness of 1/2" - 1/8" (1-3 mm) are considered acceptable.

**Color** — Every effort is made to ensure there is minimal color variation, however some can be expected as our rugs are made primarily from natural fibers. All cut pile rugs will exhibit light and dark patches over time, as the fibers bend and reflect the light differently. This rug is designed to display gentle linear variations across the background. Placing rugs in direct and continuous sunlight will cause them to fade and is not a manufacturing fault.

**Shedding** — Natural fiber rugs will initially shed loose fibers, which can be hastened by regular vacuuming.

**Pop-ups** — Due to the nature of weaving, there will be short fibers popping up while the rug settles. These can be trimmed by hand with household scissors.

**Stock rugs** — From time to time a product will be out of stock. Armadillo will endeavour to ensure items are back in stock within 4 – 6 weeks.

**Underlay/Rug pads** — We recommend using an underlay/ rug pad with all of our products.

# Medea



Colors & codes

Sterling & Graphite  
MED-ST/GP



Ivory & Opal  
MED-IV/OP



Imperial

Custom only

Metric

Custom only

Notes

Handmade in India under Fair Trade standards. Custom size available. Underlay available. Underlay available. Max. size 19'8" x 49'3" (6 x 15 m).

Length of rug does not include tassels (¾" or 20 mm each end).

Fiber & construction

Fiber: **Wool**

Construction: **Hand knotted**

End finish: **Cotton tassels**

Height: **¾" (10 mm)**

Knot count: **100 /inch<sup>2</sup>**

Composition

100% Wool Pile / 100% Cotton Warp & Weft

Suitability

Indoor

Residential

Light commercial project

Areas of use

Living

Dining

Bedroom

Hallway

**Care instructions** — Vacuum your rug regularly as shedding of loose fibers will occur with a new rug (do not use a rotating or brush head on the vacuum cleaner).

Promptly clean spills by blotting with a clean, undyed cloth. Do not dry clean or use harsh chemicals that could damage or fade your rug. Never fold your rug for storage or keep in an airtight bag. Avoid direct or continuous exposure to sunlight and rotate your rug to promote even wear. Professional cleaning is recommended on occasion to ensure the long life of your rug.

Please refer to our website for more information: [armadillo-co.com](http://armadillo-co.com)

**Delivery time for custom sizes and colors** — 16 – 20 weeks.

**Sizing** — Due to our rugs being a handmade product, a 3% size variation is possible. Variations in pile height and total thickness of ½" - ⅜" (1-3 mm)) are considered acceptable.

**Color** — Every effort is made to ensure there is minimal color variation, however some can be expected as our rugs are made primarily from natural fibers. All cut pile rugs will exhibit light and dark patches over time, as the fibers bend and reflect the light differently. This rug is designed to display gentle linear variations across the background. Placing rugs in direct and continuous sunlight will cause them to fade and is not a manufacturing fault.

**Shedding** — Natural fiber rugs will initially shed loose fibers, which can be hastened by regular vacuuming.

**Pop-ups** — Due to the nature of weaving, there will be short fibers popping up while the rug settles. These can be trimmed by hand with household scissors.

**Stock rugs** — From time to time a product will be out of stock. Armadillo will endeavour to ensure items are back in stock within 4 – 6 weeks.

**Underlay/Rug pads** — We recommend using an underlay/ rug pad with all of our products.

# Mojave



### Colors & codes

Natural  
MOJ-NT



Laurel  
MOJ-LA



Cashew  
MOJ-CS



### Imperial

5'7" x 7'10"

8' x 10'

9' x 12'

10' x 14'

### Metric

1.7 x 2.4 m

2.4 x 3 m

2.7 x 3.6 m

3 x 4.2 m

### Notes

Handmade in India under Fair Trade standards. Custom size available. Underlay available. Max. size 13'2" x 16'5" (4 x 5 m).

Length of rug does not include end finishes 3 1/2" (90 mm) each end.

### Fiber & construction

Fiber: **Jute**

Construction: **Hand knotted**

End finish: **20 mm flat weave, 70 mm fringe**

Height: **5/8" (15 mm)**

### Composition

100% Jute Pile / 100% Jute Warp

### Suitability

Indoor

Residential

### Areas of use

Living

Bedroom

**Care instructions** — Vacuum your rug regularly as shedding of loose fibers will occur with a new rug (do not use a rotating or brush head on the vacuum cleaner).

Promptly clean spills by blotting with a clean, undyed cloth. Do not dry clean or use harsh chemicals that could damage or fade your rug. Never fold your rug for storage or keep in an airtight bag. Avoid direct or continuous exposure to sunlight and rotate your rug to promote even wear. Professional cleaning is recommended on occasion to ensure the long life of your rug.

Please refer to our website for more information: [armadillo-co.com](http://armadillo-co.com)

**Delivery time for custom sizes** — 13 – 17 weeks.

**Sizing** — Due to our rugs being a handmade product, a 3% size variation is possible. Variations in pile height and total thickness of 1/2" - 1/8" (1-3 mm) are considered acceptable.

**Color** — Every effort is made to ensure there is minimal color variation, however some can be expected as our rugs are made primarily from natural fibers. Placing rugs in direct and continuous sunlight will cause them to fade and is not a manufacturing fault. Please note that the colors are indicative only and true colors are best matched to the samples before ordering.

**Shedding** — Natural fiber rugs will initially shed loose fibers, which can be hastened by regular vacuuming.

**Pop-ups** — Due to the nature of weaving, there will be short fibers popping up while the rug settles. These can be trimmed by hand with household scissors.

**Stock rugs** — From time to time a product will be out of stock. Armadillo will endeavour to ensure items are back in stock within 4 – 6 weeks.

**Underlay/Rug pads** — We recommend using an underlay/ rug pad with all of our products.

# Odessa



### Colors & codes

Arborio  
ODE-AR



Caraway  
ODE-CW



Zinc  
ODE-ZN



Kohl  
ODE-KO



### Imperial

8' x 10'

9' x 12'

10' x 14'

### Metric

2.4 x 3 m

2.7 x 3.6 m

3 x 4.2 m

### Notes

Handmade in India under Fair Trade standards. Custom size available. Rug pad available. Max. size 27'11" x 32'10" (8.5 x 10 m).

Length of rug does not include tassels (3/4" or 20 mm each end).

### Fiber & construction

Fiber: **Wool**

Construction: **Hand knotted**

End finish: **Cotton tassels**

Height: **3/8" (10 mm)**

Knot count: **64 /inch<sup>2</sup>**

### Composition

100% Wool Pile / 100% Cotton Weft / 100% Cotton Warp

### Suitability

Indoor

Residential

Commercial

Hall Runners

### Areas of use

Living

Dining

Bedroom

Hallway

**Care instructions** — Vacuum your rug regularly as shedding of loose fibers will occur with a new rug (do not use a rotating or brush head on the vacuum cleaner).

Promptly clean spills by blotting with a clean, undyed cloth. Do not dry clean or use harsh chemicals that could damage or fade your rug. Never fold your rug for storage or keep in an airtight bag. Avoid direct or continuous exposure to sunlight and rotate your rug to promote even wear. Professional cleaning is recommended on occasion to ensure the long life of your rug.

Please refer to our website for more information: [armadillo-co.com](http://armadillo-co.com)

**Delivery time for custom sizes and colors** — 16 – 20 weeks.

**Sizing** — Due to our rugs being a handmade product, a 3% size variation is possible. Variations in pile height and total thickness of 1/32" - 1/8" (1-3 mm) are considered acceptable.

**Color** — Every effort is made to ensure there is minimal color variation, however some can be expected as our rugs are made primarily from natural fibers. All cut pile rugs will exhibit light and dark patches over time, as the fibers bend and reflect the light differently. This rug is designed to display linear striations across the background. Placing rugs in direct and continuous sunlight will cause them to fade and is not

a manufacturing fault. Please note that the colors are indicative only and true colors are best matched to the samples before ordering.

**Shedding** — Natural fiber rugs will initially shed loose fibers, which can be hastened by regular vacuuming.

**Pop-ups** — Due to the nature of weaving, there will be short fibers popping up while the rug settles. These can be trimmed by hand with household scissors.

**Stock rugs** — From time to time a product will be out of stock. Armadillo will endeavour to ensure items are back in stock within 4 – 6 weeks.

**Underlay/Rug pads** — We recommend using an underlay/ rug pad with all of our products.



# Paragon



Colors & codes

Flint PAR-FL		Birch PAR-BI	
Shadow PAR-SW		Primrose PAR-PR	

Imperial

8' x 10'  
9' x 12'  
10' x 14\*

Metric

2.4 x 3 m  
2.7 x 3.6 m  
3 x 4.2 m\*

Notes

Handmade in India under Fair Trade standards. Custom size available. Underlay available. Underlay available. Max. size 19'8" x 49'3" (6 x 15 m).

\* 10' x 14' only available in Flint and Birch.

Length of rug does not include tassels (¾" or 20 mm each end).

Fiber & construction

Fiber: **Wool**

Construction: **Hand knotted**

End finish: **Cotton tassels**

Height: **¾" (10 mm)**

Knot count: **100 /inch<sup>2</sup>**

Composition

100% Wool Pile / 100% Cotton Warp & Weft

Suitability

Indoor

Residential

Light commercial project

Areas of use

Living

Dining

Bedroom

Hallway

**Care instructions** — Vacuum your rug regularly as shedding of loose fibers will occur with a new rug (do not use a rotating or brush head on the vacuum cleaner).

Promptly clean spills by blotting with a clean, undyed cloth. Do not dry clean or use harsh chemicals that could damage or fade your rug. Never fold your rug for storage or keep in an airtight bag. Avoid direct or continuous exposure to sunlight and rotate your rug to promote even wear. Professional cleaning is recommended on occasion to ensure the long life of your rug.

Please refer to our website for more information: [armadillo-co.com](http://armadillo-co.com)

**Delivery time for custom sizes and colors** — 16 – 20 weeks.

**Sizing** — Due to our rugs being a handmade product, a 3% size variation is possible. Variations in pile height and total thickness of ½" - ⅜" (1-3 mm) are considered acceptable.

**Color** — Every effort is made to ensure there is minimal color variation, however some can be expected as our rugs are made primarily from natural fibers. All cut pile rugs will exhibit light and dark patches over time, as the fibers bend and reflect the light differently. This rug is designed to display gentle linear variations across the background. Placing rugs in direct and continuous sunlight will cause them to fade and is not a manufacturing fault.

**Shedding** — Natural fiber rugs will initially shed loose fibers, which can be hastened by regular vacuuming.

**Pop-ups** — Due to the nature of weaving, there will be short fibers popping up while the rug settles. These can be trimmed by hand with household scissors.

**Stock rugs** — From time to time a product will be out of stock. Armadillo will endeavour to ensure items are back in stock within 4 – 6 weeks.

**Underlay/Rug pads** — We recommend using an underlay/ rug pad with all of our products.

# Sistine



### Colors & codes

Peregrine  
SIS-PE



Manuka  
SIS-MN



Semolina  
SIS-SL



### Imperial

8' x 10'

9' x 12'

10' x 14'

### Metric

2.4 x 3 m

2.7 x 3.6 m

3 x 4.2 m

### Notes

Handmade in India under Fair Trade standards. Custom size available. Underlay available. Max. size 14'9" x 26'3" (4.5 x 8 m).

Length of rug does not include tassels ¾" (20 mm) each end.

### Fiber & construction

Fiber: **Wool and silk**

Construction: **Hand knotted**

End finish: **Cotton tassels**

Height: **9/16" (14 mm)**

### Composition

75% Silk 25% Wool Pile / 100% Cotton Warp

### Suitability

Indoor

Residential

### Areas of use

Living

Bedroom

**Care instructions** — Vacuum your rug regularly as shedding of loose fibers will occur with a new rug (do not use a rotating or brush head on the vacuum cleaner).

Promptly clean spills by blotting with a clean, undyed cloth. Do not dry clean or use harsh chemicals that could damage or fade your rug. Never fold your rug for storage or keep in an airtight bag. Avoid direct or continuous exposure to sunlight and rotate your rug to promote even wear. Professional cleaning is recommended on occasion to ensure the long life of your rug.

Please refer to our website for more information: [armadillo-co.com](http://armadillo-co.com)

**Delivery time for custom sizes** — 22 – 26 weeks.

**Sizing** — Due to our rugs being a handmade product, a 3% size variation is possible. Variations in pile height and total thickness of ½" - ¾" (1-3 mm) are considered acceptable.

**Color** — Every effort is made to ensure there is minimal color variation, however some can be expected as our rugs are made primarily from natural fibers. All cut pile rugs will exhibit light and dark patches over time, as the fibers bend and reflect the light differently. This rug is designed to display gentle linear variations across the background. Placing rugs in direct and continuous sunlight will cause them to fade and is not a manufacturing fault. Please note that the colors are indicative only and true colors are best matched to the samples before ordering.

**Shedding** — Natural fiber rugs will initially shed loose fibers, which can be hastened by regular vacuuming.

**Pop-ups** — Due to the nature of weaving, there will be short fibers popping up while the rug settles. These can be trimmed by hand with household scissors.

**Stock rugs** — From time to time a product will be out of stock. Armadillo will endeavour to ensure items are back in stock within 4 – 6 weeks.

**Underlay/Rug pads** — We recommend using an underlay/ rug pad with all of our products.