

C O L L E C T I O N S



Melbourne Sydney Beverly Hills New York Toronto London

BULLET + STONE

AN ELEGANTLY HANDCRAFTED STATEMENT.

Unapologetically unique, fiercely bold, and beautifully crafted knobs and handles make a truly unique statement. Bullet + Stone pairs the rugged beauty and natural imperfections of raw concrete with luxurious metals to offer a visual and tactile contrast that envisions new realms of design.

Material: Solid Brass



A. Concrete Club
CCL-R10-WBM-LGR

+ h53 x w136 x d51mm
+ Metal finish:
Weathered Brass Medium
+ Concrete finish: Luna Grey
+ Metal parts available in all
dD special finishes

B. Concrete Quad
CQU-R10-WBM-LGR

+ h53 x w133 x d51mm
+ Metal finish:
Weathered Brass Medium
+ Concrete finish: Luna Grey
+ Metal parts available in all
dD special finishes

C. Concrete Niki
CNK-R05-WBM-LGR

+ h60 x w60 x d55mm
+ Metal finish:
Weathered Brass Medium
+ Concrete finish: Luna Grey
+ Metal parts available in all
dD special finishes

MONTANA

THOUGHTFULLY HUMBLE DESIGN.

Montana is inspired by the minimalist philosophy of removing clutter and complexity in daily life to create an atmosphere of serenity. A nod to Mid-Century Modern and Scandinavian design is apparent in the clean, simple lines of the collection. Rich metals bring approachable warmth to a contemporary environment while providing an elegant focal point.

Material: Solid Brass



A. Montana Entrance Handle G5180-25
Projection : 58mm | Width : 25mm
Available sizes | 300 | 400 | 600 | 800mm



B. Montana Flush Pull FP580-500
Width : 100mm Height : 500mm
Box Depth : 17mm Face Plate : 3mm

E. Montana Door Lever MT-R10
Projection : 48mm
Length : 131mm

C. Montana Flush Pull FP560-400
Width : 75mm Height : 400mm
Box Depth : 17mm Face Plate : 3mm

F. Montana Cabinet Handle 5180
Projection : 26mm Width : 10mm
Available sizes | 96 | 128 | 160 | 224mm

D. Montana Entrance Handle G5180
Projection : 58mm Width : 19mm or 25mm
Available sizes | 300 | 400 | 600 | 800mm

G. Montana Cabinet Handle 3750
Projection : 35mm
Available sizes | 37 | 75 | 150 | 300mm

BULL PULL

WITH A GEOMETRIC LOOK THAT'S BOTH ELEGANT AND ERGONOMIC. Bull Pull concealed flush door pulls become one with the door for an integrated look. Bull Pull's simple yet bullishly bold design provides a high-end solution for sliding or hinged doors in both residential and hospitality applications.

Material Solid Brass



A. Bull Pull Magnetic Privacy Sliding FP600-11

B. Bull Pull Passage Sliding FP600

C. Bull Pull Privacy Hinged door FP660-11

D. Bull Pull Passage Hinged door FP660

Standard Bull Pull dimensions: W 80 x H 300 x 35/40/45 door thickness. Custom sizes available.

KAMEN

WITH MASCULINE YET SOPHISTICATED PROPORTIONS, THE KAMEN FAMILY DEMONSTRATES THAT VERSATILE ELEGANCE DOESN'T ALWAYS NEED TO BE SOFT.

Inspired by the increasing popularity of high-end residential warehouse conversions, the Kamen family fuses an industrial aesthetic with the perception of delicate craftsmanship. With knurled detailing and refined proportions, the family strays from the overbearing presence many of it's competitors exhibit. Instead, it opts for a projection that has a lower profile, a slimmer handle and even slimmer stems.

Material: Solid Brass



A. Kamen Entrance Handle G6110
 Projection : 54mm ø 19mm Projection : 70mm ø : 25mm
 Projection : 88mm ø 40mm Projection : 102mm ø : 50mm
Available sizes 300 400 600 800mm
 Door height 3000mm Handle O/A 2400mm



B. Kamen
 Privacy Snib **KE11**
 Projection 45.5mm
 Ø 20mm

C. Kamen
 Cabinet Knob **6120**
 Projection 35mm
 Ø 20mm

D. Kamen
 T-Bar Handle **6115-80**
 Projection : 32mm ø : 20mm
 Width : 80mm

E. Kamen Kali
 Door Lever **KKA-R10**
 Projection 57mm
 Projection 19mm
 Length 136mm

F. Kamen Flinders
 Door Lever **KFL-R10**
 Projection 62mm
 Projection 19mm
 Length 148mm

G. Kamen
 Entrance Handle **G6110-19**
 Projection : 54mm Width : 19mm
 Avail. sizes 300 400 600 800mm

H. Kamen
 Entrance Handle **G6110-25**
 Projection : 70mm Width : 25mm
 Avail. sizes 400 600 800mm

I. Kamen
 Cabinet Handles **6110**
 Projection : 32mm ø : 12mm
 Avail. sizes 96 128 160 224mm



NIKI

PLAYFUL YET ELEGANT, NIKI'S CLEAN CIRCULAR GEOMETRY IS EQUALLY CAPTIVATING AND WELCOMING.

It's nautical inspiration stems from the use of porthole windows in Streamline Modern and Art Deco architecture. The Niki is also available with an ornate step-down perimeter. When paired with a satin finish, this decorative element and Niki's starburst reflection of light is whole-heartedly indicative of Art Deco inspired design.

Material: Solid Brass



A. Niki Entrance Handle G2021
Available sizes ø 200 | 250 | 300mm

B. Niki Entrance Handle Entrance G2020
Available sizes ø 100 | 150 | 200 | 250 | 300mm

C. Niki Cabinet Knob 2020
Available sizes ø 30 | 50 | 70mm

D. Niki Cabinet Knob 2021
Available sizes ø 30 | 50 | 70mm

E. Niki Cabinet Knob 2820
Available sizes ø 50 | 70mm

F. Niki Cabinet Knob 2821
Available sizes ø 50 | 70mm

G. Niki Door knob NK-R05
Size ø : 60mm Projection 55mm

CLUB

SMOOTH SIMPLICITY WITH OLD-WORLD HOMAGE.

A relaxed take on modern silhouettes, the Club collection is highly adaptable. Dress it with a matte black finish for contemporary Brutalist projects or adorn it in brass or nickel to complement a variety of modern interiors. Club combines beautifully with Nikki when used in polished finishes.

Material: Solid Brass



A. Club Entrance Handle **G3608-25**

Projection : 50mm Width : 25mm

Available sizes : 300 | 400 | 600mm

B. Club Entrance Handle **G3608-40**

Projection : 55mm Width : 40mm

Available sizes : 400 | 600 | 800mm

C. Club Door Lever **CL-PR60**

Projection : 46mm

Length : 122mm

Plate size : 250x25mm

D. Luna Door Lever **LU-R10**

Projection : 46mm

Length : 122.5mm

E. Club Door Lever **CL-R10**

Projection : 46mm

Length : 136mm

F. Club Cabinet Handle **3608**

Projection : 26mm Width : 10mm

Available sizes : 96 | 128 | 160 | 224 | 288mm

CLUB BATHWARE



SOPHISTICATED YET ROBUST.

The distinctive shape of Club is at once elegant and confident, a sophisticated look of soft, clean lines with a surprisingly robust feel. The rounded edges work beautifully with a range of decors, and the Club bath collection features the addition of a perfectly sized, complementary shelf.

Material: Solid Brass



A. Club Bath Shelf **CL-81**

Projection	150mm
Length	400mm
Width	25mm

B. Club Toilet Roll Holder **CL-44**

Projection	75mm
Length	170mm
Width	25mm

C. Club Towel Rail **CL-42**

Projection	50mm
Length	400 / 600mm
Width	25mm

D. Club Robe Hook **CL-83**

Projection	40mm
Length	40mm
Width	25mm

*Including 2 hooks

FLINDERS

SIMPLY, SOFTLY MODERN.

Inspired by the lightweight frame of his bicycle, famed Bauhaus designer Marcel Breuer began experimenting with steel tubing in furniture design. His 1920s visionary explorations have stood the test of time with the use of cylindrical, tubular shapes remaining relevant in design today. The gentle curves add softness and a touch of whimsy to a room while remaining steadfastly simple and modern.

Material: Solid Brass



A. Flinders Entrance Handle G3180-25
Projection : 70mm x ø25mm
Available sizes | 400 | 600 | 800mm

B. Flinders Entrance Handle G3180-19
Projection : 64mm x ø19mm
Available sizes | 300 | 400 | 600 | 800mm

C. Kamen Flinders Lever KFL-R10
Projection : 62mm
Length : 122mm

D. Flinders Door Lever FL-R10
Projection : 62mm
Length : 122mm

E. Lodden Door Lever LO-R10
Projection : 56mm
Length : 119mm

F. Flinders Cabinet Handle 3180
Projection : 30mm x ø10mm
Available sizes | 96 | 128 | 160 | 224mm

MONTE SUGI

CENTURIES OLD TECHNIQUE.

Based on the organic feel of the Monte Collection, Monte Sugi uses a centuries old Japanese technique to breathe ancient mystery into new wood. While average treatments only cover the surface of wood, Shou Sugi Ban involves burning or charring wood with fire and smoke. The resulting shade of deep black is a long-lasting, sustainable finish with an alluring appeal.



A. Sugi Niki Entrance Handle G4040-150
Projection : 50mm Face thickness : 10-15mm
Available sizes | 150 | 200 | 250 | 300mm

B. Sugi Niki Cabinet Handle 4040-70
Projection : 23mm Face thickness : 5mm
Available sizes | 50 | 70mm

C. Sugi Niki Door Knob TNK-R05
Projection : 55mm Size ϕ : 60mm

D. Sugi Zola Door Lever TZO-R10
Projection : 57mm Length : 143mm

E. Sugi Club Door Lever TCL-R10
Projection : 51mm Length : 136mm

F. Sugi Quad Door Lever TQU-R10
Projection : 51mm Length : 110mm

G. Sugi Lanex Door Lever TLX-R10
Projection : 62mm Length : 112mm

H. Sugi Quad Blade Pull G4285
Projection : 43mm Width : 20mm
Available sizes | 400 | 600mm

I. Sugi Club Entrance Handle G4608-25 Shown G4608-40
Projection : 57mm Width : 25 or 40mm
Available sizes 25: | 300 | 400 | 600mm
Available sizes 40: | 400 | 600 | 800mm

J. Sugi Entrance Handle G4210-25 Shown G4210-40
Projection : 70 / 85mm ϕ 25 / ϕ 40mm
Available sizes 25: | 300 | 400 | 600 |
Available sizes 40: | 400 | 600 | 800 | 1000mm

MONTE

WELCOME NATURE.

Monte timber brings organic texture indoors, allowing the experience of embracing and connecting with nature at every touch. Available in American White Oak and Black Walnut, either oiled or raw, this beautiful wood will bring sensual warmth to any décor. Choose from linear handles, blade pulls, lever handles and circular knobs for that special finishing touch.

Material: Solid Brass and Hardwood



A. Monte Entrance Plain Handle G4040 or with recess **G4041** (Shown) Face thickness : 10-15mm
Available sizes \varnothing 150 200 250 300mm

B. Monte Cabinet Handle 4040
Available sizes \varnothing 50 70mm

C. Monte Cabinet Handle 4841 (Shown) \varnothing 70mm
C. Monte Entrance Handle G4841 \varnothing 300mm

D. Monte Cabinet Handle 4840 (Shown) \varnothing 70mm
D. Monte Entrance Handle G4840 \varnothing 300mm

E. Monte Cabinet Handle 4041
Available sizes \varnothing 50 70mm

F. Monte Niki Door Knob TNK-R05
Size : \varnothing 60mm Projection : 55mm

G. Monte Lanex Door Lever TLX-R10

Projection 62mm
Length 138mm

H. Monte Club Door Lever TCL-R10

Projection 51mm
Length 136mm

I. Monte Zola Door Lever TZO-R10

Projection 57mm
Length 143mm

J. Monte Entrance Handle G4210
Projection : 70mm \varnothing : 25mm or Projection : 85mm \varnothing : 40mm
Available sizes 200 300 400 600mm

K. Monte Entrance Handle G4608
Projection : 57mm \varnothing : 25mm or Projection : 57mm \varnothing : 40mm
Available sizes 200 300 400 600mm

L. Monte Blade Pull
Available sizes : **4283** 12x40 or **4285** 20x40 or **4287** 20x50
Available sizes 200 300 400 500 600mm



FLUSH PULLS

NOW YOU SEE ME, NOW YOU DON'T.

Flush Pulls offer the unusual benefit of being either inconspicuous or bold, the choice is yours. With a sleek low-profile, Flush Pulls are a perfect solution for pocket doors. A wide variety of finishes offer the option to pair with complementary pulls for a fully integrated design.

Material: Solid Brass

Montana Flush Pull
FP560 75 x 400mm | **FP580** 100 x 500mm



Montana Flush Pull
A : FP580 100 x 500mm
B : FP560 75 x 400mm
Box Depth: 17mm
Face Plate: 3mm

C. FP903
50 x 150/250mm
Box Depth: 14mm
Face Plate: 2mm

D. FP100
45 x 100/200mm
Box Depth: 10/12mm
Face Plate: 3mm

E. FP41
40 x 120/150/200mm
Box Depth: 17mm
Face Plate: 3mm

F. FP61
35/45 x 120/150mm
Box Depth: 13/17mm
Face Plate: 3mm

**G. Heavy Duty
Edge Pull 2902**
Projection : 17mm
Width : 25mm
Height : 112mm

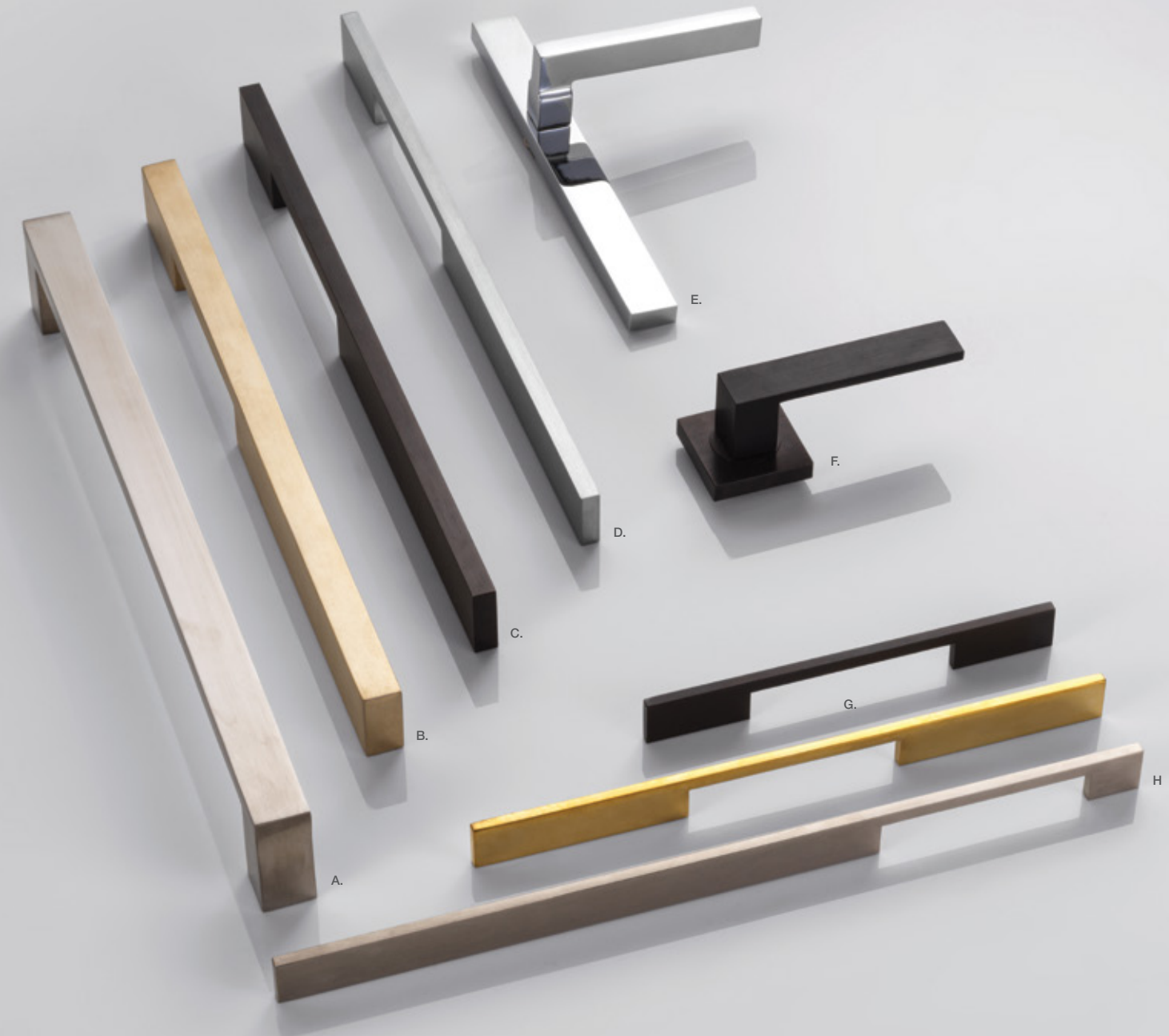
H. FP800-65-200
I. FP811-65-200
J. FP812-65-200
65 x 200mm
Box Depth: 10mm
Face Plate: 3mm

K. FP500-65
L. FP512-65
M. FP511-65
ø : 65mm Box
Depth: 8mm
Face Plate: 3mm

QUAD

MODERN VERSATILITY.

The cutting-edge, sleek, square lines of Quad bring a confidently stunning feature to interiors. Bold, modern, and incredibly versatile, Quad offers myriad opportunities for unexpected texture with concrete, metal and wood handles.



A. Quad Entrance Handle **QUP-25**

Projection : 55mm Width : 25 or 40mm
Available sizes | 400 | 600 | 800

B. Quad Blade Pull **6285**

Projection : 38mm Width : 19mm
Available sizes | 200 | 300 | 400 | 500 | 600

C. Quad Blade Pull **6283**

Projection : 38mm Width : 12mm
Available sizes | 200 | 300 | 400 | 500 | 600

D. Quad Blade Pull **6280**

Projection : 32mm Width : 10mm
Available sizes | 200 | 300 | 400 | 500 | 600

E. Zola Door Lever **ZO-PS60**

Projection : 57mm Width : 117mm
Plate size : 250 x 25mm

F. Quad Door Lever **QU-R50**

Projection : 47mm Width : 110mm

G. Quad Blade Pull - Centre Cutout **5700**

Projection : 25mm Width : 6mm
Available sizes | 168 | 272 | 368

H. Quad Blade Pull - Offset Cutout **5701**

Projection : 25mm Width : 6mm
Available sizes | 168 | 272 | 368

BLADE PULLS

LESS IS MORE.

The breathtaking purity of minimalism is embodied in the slender form of Blade Pulls. No embellishments are required, nor welcome. The exquisite simplicity speaks volumes. Blade Pulls are available in a range of luscious metal finishes as well as standard and custom lengths.

Door height 2600mm Handle O/A 2400mm

Custom Blade pull: Sydney Australia



A. Blade Pull Center Cutout 5700
Projection : 25mm Width : 6mm
Available sizes : 168 272 368

B. Blade Pull Offset Cutout 5701
Projection : 25mm Width : 6mm
Available sizes : 168 272 368

C. Quad Blade Pull 6287
Projection : 50mm Width : 19mm
Available sizes : 300 400 600 800

D. Quad Blade Pull 6285
Projection : 38mm Width : 19mm
Available sizes : 200 300 400 500 600

E. Quad Blade Pull 6283
Projection : 38mm Width : 12mm
Available sizes : 200 300 400 500 600

F. Quad Blade Pull 6280
Projection : 32mm Width : 10mm
Available sizes : 200 300 400 500 600

LEVERS



MAKE A STATEMENT.

Virtually any décor can be enhanced with our wide variety of Lever styles and finishes. Choose from graceful curves, strong geometric shapes, or gently rounded edges in satin, polished, matte, or split finishes to make a definitive statement.



A. Luna LU-R10
Projection : 46mm Length : 122.5mm

B. Gilda GD-R10
Projection : 55mm Length : 116mm

C. Gabriella GA-R10
Projection : 60mm Length : 107mm

D. Prisma PR-R10
Projection : 50mm Length : 108mm

E. Bella BL-R10
Projection : 63mm Length : 113mm

F. Catalina CA-R10
Projection : 62mm Length : 108mm

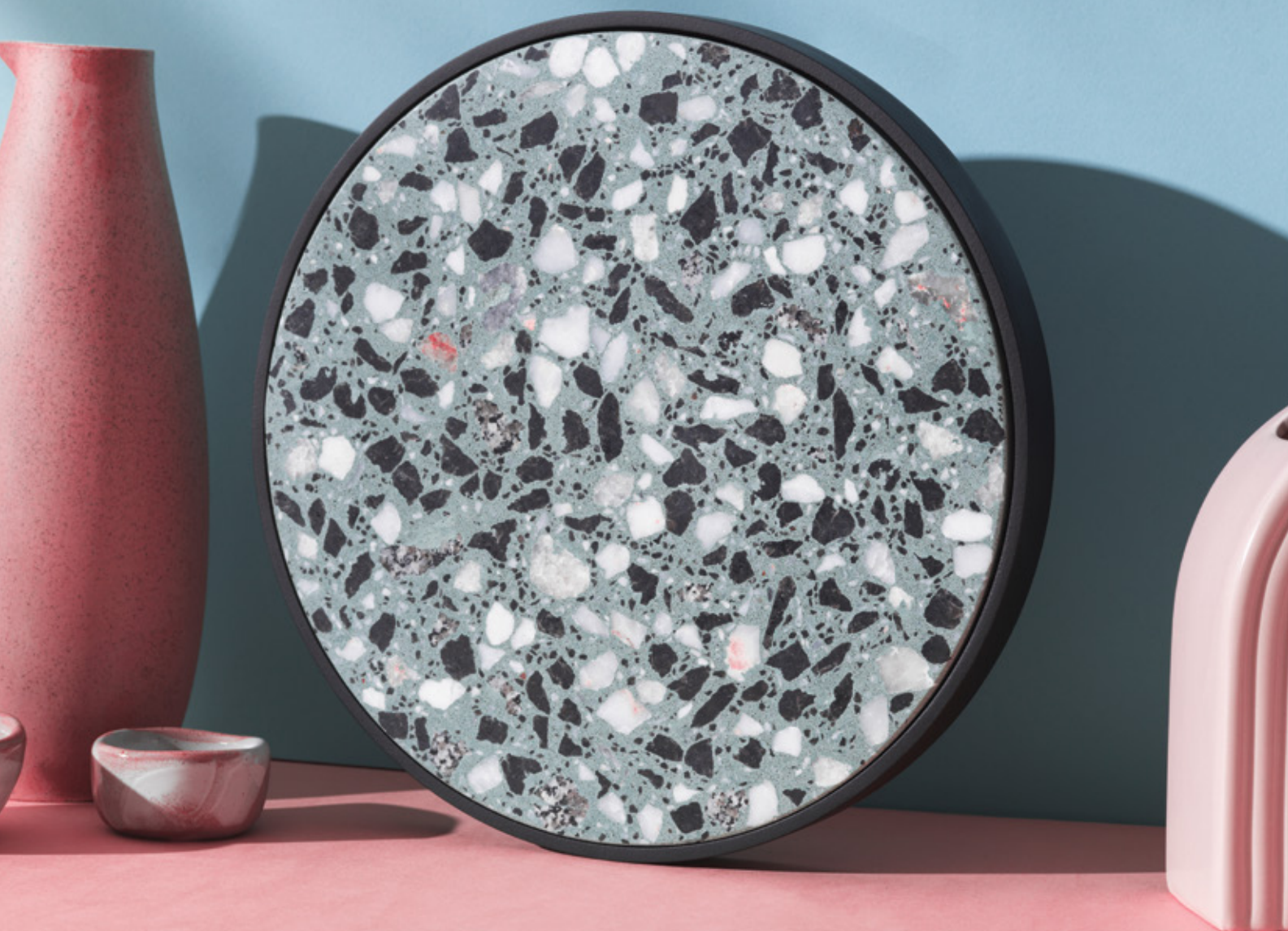
G. Lodden LO-R10
Projection : 56mm Length : 119mm

H. Kali KA-R10
Projection : 57mm Length : 111mm

I. Lanex LX-R10
Projection : 62mm Length : 112mm

J. Fedra FD-R10
Projection : 60mm Length : 134mm

GIRO ENTRANCE PULLS



TIMELESS ELEGANCE.

Playfully sophisticated, Giro's circular texture of marble, terrazzo or wood, encased in solid brass harken to European architecture and design. Stone carries with it an air of luxury and history, a natural product unparalleled in beauty and elegance. Create a signature entrance and complete the look with satin, matte, or polished metal edging.



A. Giro R2020 - Pietra Grey
Projection : 48mm Pull Thickness : 20mm
Available sizes | 190 | 200 | 250 | 300

B. Giro R2020 - Terrazzo 886
Projection : 48mm Pull Thickness : 20mm
Available sizes | 190 | 200 | 250 | 300

C. Giro R2820 - Carrara
Projection : 48mm Pull Thickness : 20mm
Available sizes | 190 | 200 | 250 | 300

D. Giro R2820 - Pietra Grey
Projection : 48mm Pull Thickness : 20mm
Available sizes | 190 | 200 | 250 | 300

E. Giro R2820 - Black Walnut
Projection : 48mm Pull Thickness : 20mm
Available sizes | 190 | 200 | 250 | 300

F. Giro R2820 - Elba Blue
Projection : 48mm Pull Thickness : 20mm
Available sizes | 190 | 200 | 250 | 300

G. Giro R2020 - Carrara
Projection : 48mm Pull Thickness : 20mm
Available sizes | 190 | 200 | 250 | 300

H. Giro R2020 - Elba Blue
Projection : 48mm Pull Thickness : 20mm
Available sizes | 190 | 200 | 250 | 300

ENTRANCE PULLS

LIKE A HANDSHAKE.

Make a favorable first impression with sleekly stylish entrance pulls that set the tone for your décor. Choose from a selection of innovative blade pulls, classic round pulls or flat pulls with rounded edges and personalize the design with metal, wood or a combination.

Constructed from the highest quality brass and materials, a selection of 304 grade and marine grade 316 stainless steel or timber, Designer Doorware's entrance handles harmoniously blend form with and function.

Available in custom and standard lengths.

Inspiration often emerges in the most ordinary daily ventures. In this instance, our Director/Designer, Joseph Di Benedetto, became transfixed with a plus sign. Simple, elegant, seemingly ordinary, yet at the same time, an extraordinary opportunity for transformation. This vision culminated in the design for the front showroom door of our newly renovated Head Office.

If it can be imagined, it can be created.



A. Monte Quad G4287
Projection :53mm W :20mm

B. Monte Club G4608-40
Projection :57mm W :40mm

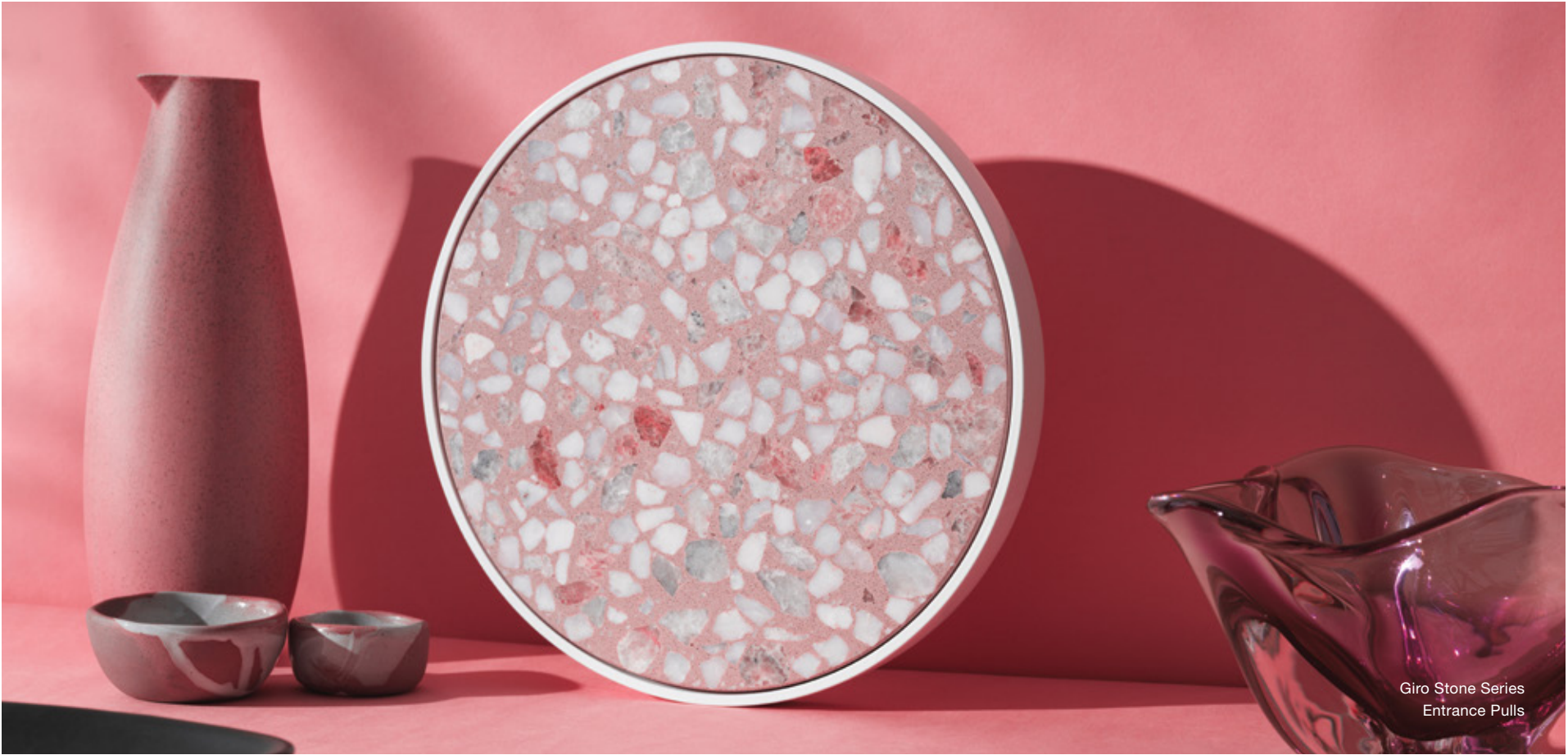
C. Monte G4210-40
Projection :85mm ø 40mm

D. Kamen G6110-50
Projection :102.5mm ø 50mm

E. Kamen
Entrance Handle **G6110-40**
Projection :102.5mm ø 40mm



Montana Lever



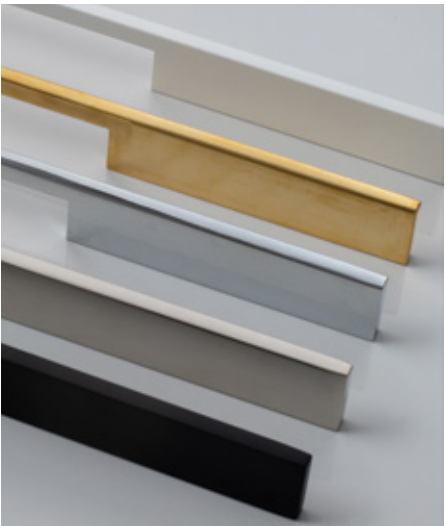
Giro Stone Series
Entrance Pulls



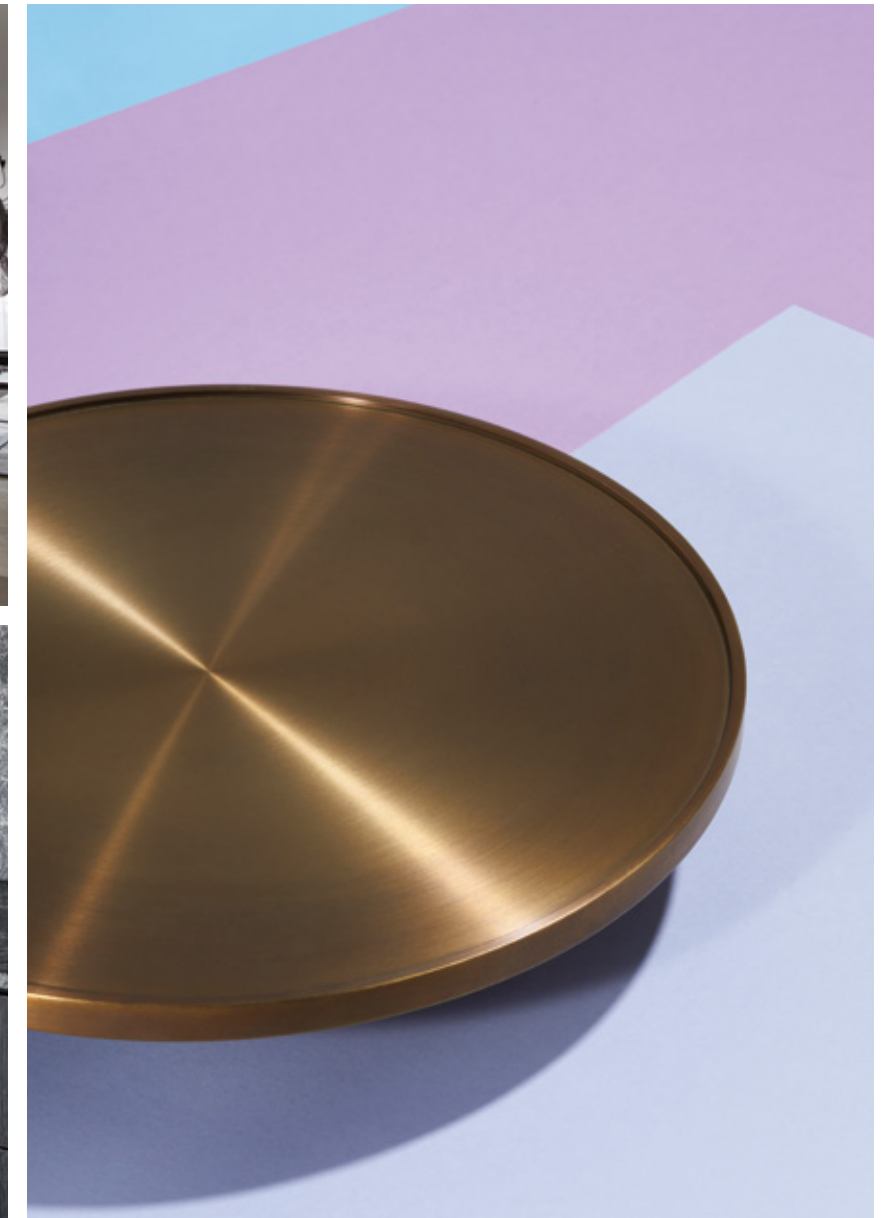
Giro Monte Series
Entrance Pulls



VGM Gunmetal



Bullet + Stone
Club Lever



IT IS NOT HOW
YOU START,
BUT HOW IT'S
FINISHED.



STANDARD & SPECIAL FINISHES
Our extensive range of high-quality special finishes provides that ever-so-impressive final touch. As hardworking as they are beautiful, these finishes are offered for most of our collections with exceptions including specific products, substrates, and environments.

PVD (PHYSICAL VAPOR DEPOSITION)
Our state-of-the-art PVD finishing process creates a molecular bond with the surface of a metal, resulting in an incredibly durable surface that resists corrosion, discoloration, and tarnishing. This long-lasting finish offers luxurious sustainability for both residential and commercial applications.

	Weathered Brass Light (SF2) WBL		Weathered Bronze (PVD) VWB
	Weathered Brass Medium (SF1) WBM		Antique Brass Medium (SF1) ABM
	Polished Brass Unlacquered (SF1) PBU		Antique Brass Dark (SF1) ABD
	Satin Brass Unlacquered (SF1) SBU		Florentine Bronze Medium (SF2) FBM
	Brushed Brass (PVD) VBB		Florentine Bronze Dark (SF2) FBD
	Polished Nickel (SF1) PN		Oil-Rubbed Bronze (SF2) ORB
	Satin Nickel (SF1) SN		Gunmetal (PVD) VGM
	Satin Chrome (SF1) SC		Satin Black Chrome (SF2) SBC
	Polished Chrome (SF1) PC		Black Satin (PVD) VBS

CONCRETE FINISHES

The Bullet+Stone Collection uses artisanal, hand-crafted concrete components and a variety of metal finishes to highlight the beautiful contrast between raw and sumptuous contemporary materials.

Concrete is not a homogeneous, uniform material & just like natural wood or stone, the finished concrete's appearance will always have aesthetic variations of shade, color, pattern and overall size.



Luna Grey (LGR)

LIVING FINISHES

A glorious range of living finishes that add depth and warmth to every room. With no coating applied, these finishes will oxidize and age gracefully over time, morphing into the environment. It is natural to see variation all over the surface which will darken or lighten where frequently touched. With an occasional use of a nonabrasive wax, our living finishes can provide years of timeless beauty.

PVD (PHYSICAL VAPOR DEPOSITION)

Our state-of-the-art process creates a molecular bond to the surface resulting in the most durable finish suitable for commercial and residential projects. PVD products offer a high level of hardness durability, whilst not indestructible, are resistant to corrosion, discoloration and tarnishing.

ELECTROPLATING

With minimal maintenance required and a variety of finishes to choose from, electroplating offers a contemporary hard-wearing finished metal surface, making these suitable for commercial or residential projects.

POWDER COATING

Make an impressive design statement with a large selection of colours. Powder coating provides better performance than wet paint and is more resistant to chipping, scratching, and other wear because of the thermal bonding it undergoes during curing and can be applied in thicker layers.

TIMBER

A unique way of adding warmth to both the look and the touch, our Monte timber collection is offered in two hardwood species, American white oak and black walnut. These can be specified raw or with Scandinavian oil applied and are sourced from Australian FSC certified suppliers. Alternatively, we have Shou Sugi Ban, a Japanese technique used for centuries to preserve timber indefinitely, involving charring with fire and smoke which leaves behind a deep black colour.

VISIT US ON THE WEBSITE AND SOCIAL MEDIA FOR OUR EXTENSIVE COLLECTIONS, FINISHES AND CUSTOM PRODUCTS.

TIMBER FINISHES

We offer our entrance pulls, levers, cabinet handles and blade pulls in a choice of two hardwood species - American White Oak and American Black Walnut. These two species can be purchased in either a raw or Scandinavian oiled finish, shown below.

Our timber is supplied from environmentally-friendly AFS and PEFC certified sources. Other timber species such as Blackbutt and Spotted Gum are available on request.



American White
Oak - Raw
(OAK-RAW)



American White
Oak - Oiled
(OAK-OIL)



American Black
Walnut - Raw
(NUT-RAW)



American Black
Walnut - Oiled
(NUT-OIL)



**Melbourne Head Office
and Showroom**
7 Kimpton Way, Altona
VIC Australia 3018
+61 3 9300 8888

Melbourne Showroom
431 Church St, Richmond
VIC Australia 3121
03 9300 8887

Sydney Showroom
Shop 2, 35 Buckingham St
Surry Hills NSW Australia 2010
03 9300 8880

QLD
0411 410 498

TAS, SA, WA
0425 764 676

Beverly Hills
285 South Robertson Blvd
Beverly Hills CA USA 90211
+1 877 751 1411

Toronto
STAX Specialty Hardware Studio
inquiries@staxshs.com
+1 416 433 0928

London UK
Vange +44 7799 186 680
Carl +44 7554 924 900

sales@designerdoorware.com
designerdoorware.com

