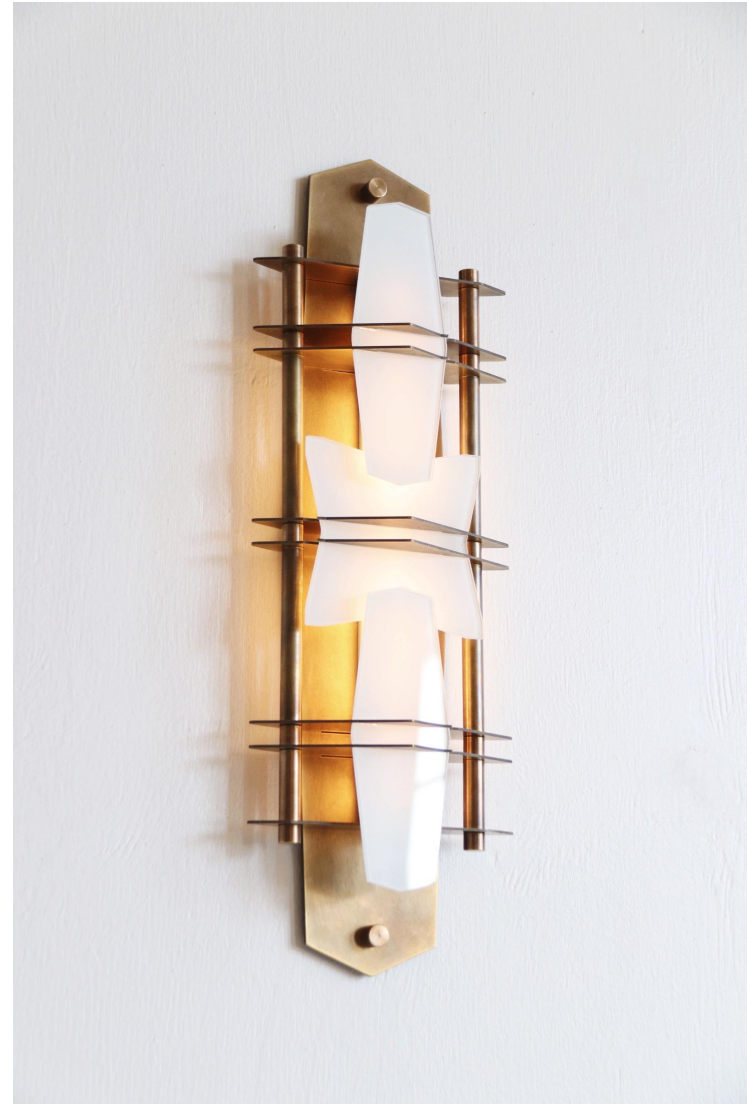


## LOST PROFILE - SPECIFICATION SHEET - **COVENANT WALL SCONCE**

Informed by the interlocking components of a snake's spine, *Covenant* is a contemporary take on a traditional glass sconce.



## LOST PROFILE - SPECIFICATION SHEET - COVENANT WALL SCONCE

PRODUCT	DIMENSIONS (mm)	WEIGHT (kg)	VOLTAGE (v)	WATTAGE (w)	DRIVER	LED COLOUR TEMP	SURFACE FINISHES
COVENANT WALL SCONCE	490 x 173 x 67	2kg	12VDC	10W	12V 40W 0-10V DIMMABLE	WARM WHITE 2700K	STD, CUSTOM
Clear enamel & powder coated finishes available on request (Add 10%) <u>Standard (STD) surface finishes:</u> Blonde Brass, Aged Brass, Dark Bronze (these finishes are waxed) <u>Custom surface finishes:</u> Brushed Nickel, Chrome, Black Chrome plating (Add 20%)							

### MATERIALS

Brass, glass, acrylic, LED.

### MAINTENANCE

All LOST PROFILE metal surfaces are waxed. These metal surfaces are designed to age and patinate. Wear gloves when handling to avoid hand prints. Clear enamel coating is available on request.

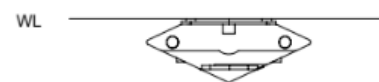
### DRIVERS & DIMMING

LOST PROFILE products are supplied with 0-10V dimmable LED drivers.

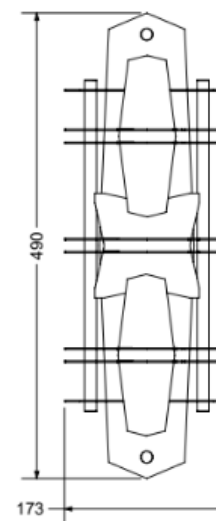
The location of the driver needs to be considered, whether in a ceiling cavity, in a wall cavity, or ideally in an accessible electricals cabinet.

### PRICING & LEAD TIMES

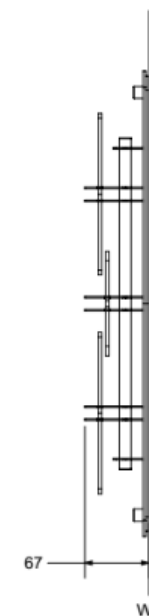
Please contact us or your nearest LOST PROFILE representative for current pricing and lead times.



TOP VIEW



FRONT VIEW



SIDE VIEW