

ROSS GARDAM



Solace is a luminous glass tear that transforms with movement, revealing two distinct identities in light and form. Through the exploration of geometric form, the interplay of two perpendicular, intersecting circles serve as the foundation for this intricate composition.

Visually enchanting, Solace emerges from a series of experiments that use innovative engineering and push the boundaries of traditional glassblowing techniques. Through the blowing process, each complex shape develops a distinct, subtly textured glass surface, making every light truly one of a kind.

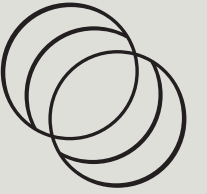






IMAGE /

LEFT / SOLACE PENDANT - FROSTED CLEAR GLASS AND BLACKENED BRASS
RIGHT / SOLACE TABLE LAMP - FROSTED BLACK GLASS AND BRUSHED BRASS
FAR RIGHT / SOLACE TABLE LAMP - FROSTED CLEAR GLASS AND BRONZED BRASS

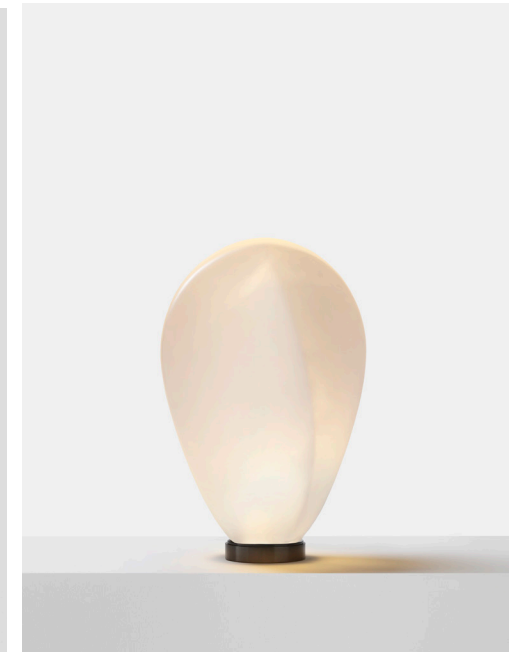
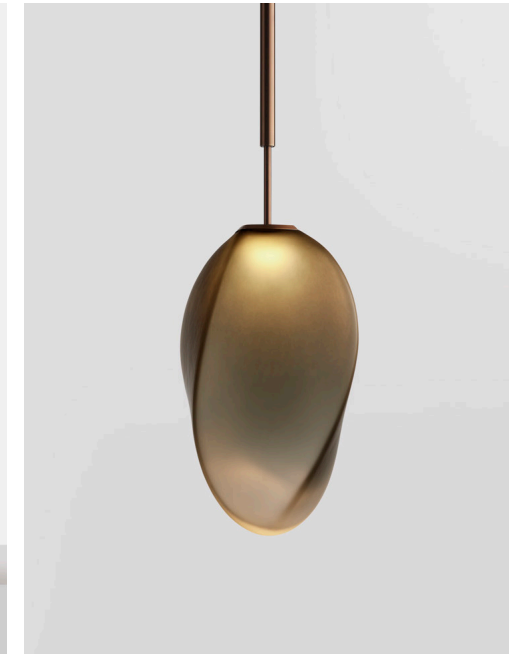
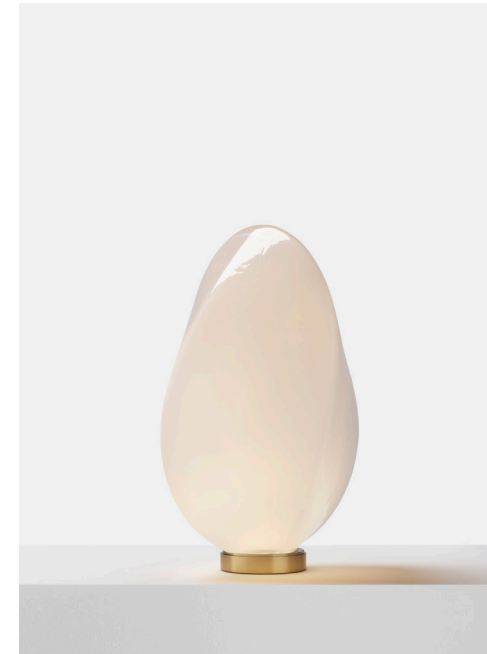


IMAGE /

FAR LEFT / SOLACE PENDANT - FROSTED BLACK GLASS AND BLACKENED BRASS

TOP LEFT / RIGHT - SOLACE TABLE LAMP - WHITE GLASS AND BRUSHED BRASS / SOLACE PENDANT - FROSTED BLACK GLASS AND BRONZED BRASS

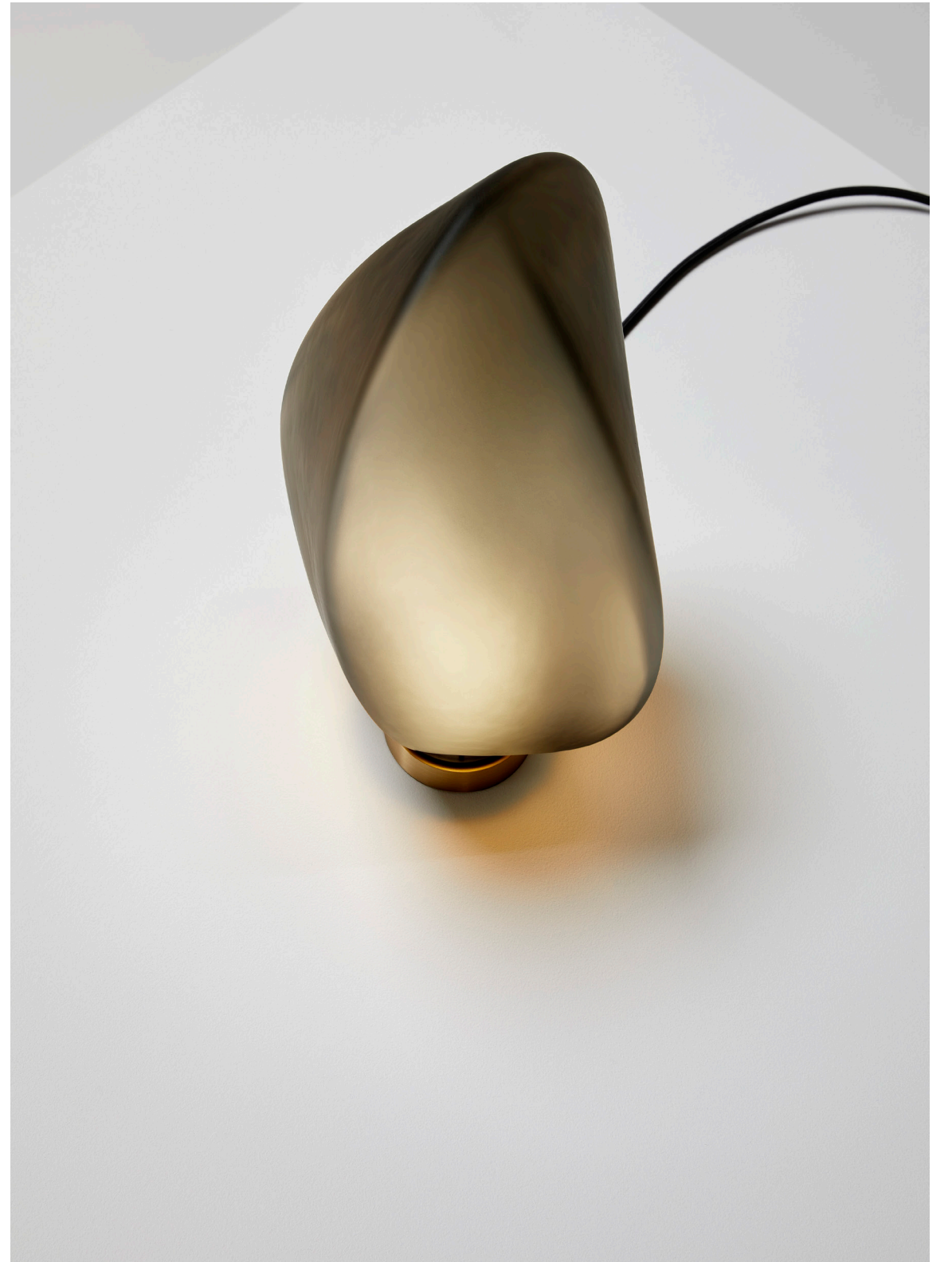
BOTTOM LEFT / RIGHT - SOLACE PENDANT - WHITE GLASS AND BRUSHED BRASS / SOLACE TABLE LAMP - FROSTED CLEAR GLASS AND BLACKENED BRASS



IMAGE /
SOLACE PENDANT - WHITE GLASS AND BRUSHED BRASS IN VARIOUS ANGLES TURNED ON AND OFF

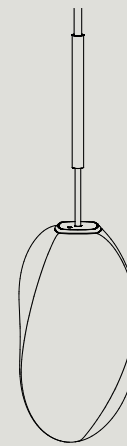


FAR LEFT / SOLACE PENDANT- FROSTED CLEAR GLASS AND BRONZED BRASS
 RIGHT / SOLACE TABLE LAMP - FROSTED BLACK GLASS AND BRUSHED BRASS





SOLACE



SOP
L 195 W 195 H 690
L 7.7" W 7.7" H 51"
MIN DROP HEIGHT - H 900 / 59"



SOL
L 195 W 195 H 380
L 7.7" W 7.7" H 27"



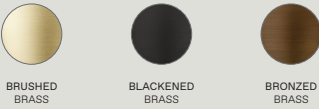
TECHNICAL SOLACE

AVAILABLE FINISHES

GLASS



BODY



MATERIAL	TREATED BRASS, GLASS	CORD	BLACK CLOTH WITH IN-LINE PUSH-DIM SWITCH AND AS/NZS STANDARD PLUG. USA/CAN NEMA-1, 2-PIN PLUG SUPPLIED FOR NORTH AMERICA/CANADA.
FINISH	ALL BRASS COMPONENTRY IS BRUSHED AND TREATED TO ACHIEVE THE AVAILABLE FINISH OPTIONS, THEN SEALED TO PREVENT ACCELERATED AGING.	CANOPY	VARIOUS - SEE SOLACE PENDANT DATA SHEET FOR AVAILABLE OPTIONS
LAMPING (PENDANT)	SELV 60V (EXTERNAL DRIVER SUPPLIED) 8W, 800LM, 2700K 220-240V REGIONS DIMMING OPTIONS · PHASE - DIMMING RANGE 5 - 100% · DALI - DIMMING RANGE 1 - 100% 110-120V REGION · PHASE DIMMING RANGE 3 - 100% · DALI DIMMING RANGE 0.1 - 100% ALL US AND CANADIAN ORDERS COME SUPPLIED WITH 120V COMPONENTRY CERTIFIED FOR USE IN THESE REGIONS. FOR OPTIMAL DIMMING PERFORMANCE WE RECOMMEND SOURCING A DIMMER CAPABLE OF SETTING THE DIMMING RANGE OF THE FIXTURE.	PRODUCT CODES SKU	EG. SOL-G-FCL-BR-BRZ SOLACE TABLE LAMP IN FROSTED CLEAR GLASS WITH A BRONZED BRASS BODY SOP-G-XXX-BR-XXX SOLACE PENDANT SOL-G-XXX-BR-XXX SOLACE TABLE LAMP
LAMPING (TABLE LAMP)	230V - 4W AC LED MODULE, 380 LUMEN PER LIGHT SOURCE. 3000K WARM WHITE, DIMMABLE. 120V - 4W AC LED MODULE, 380 LUMEN PER LIGHT SOURCE. 3000K WARM WHITE, DIMMABLE. ALL US AND CANADIAN ORDERS COME SUPPLIED WITH 120V COMPONENTRY CERTIFIED FOR USE IN THESE REGIONS.	FINISHES	GLASS WHITE (G-WHT) FROSTED BLACK (G-FBL) FROSTED CLEAR (G-FCL) BODY BRUSHED BRASS (BR-NAT) BLACKENED BRASS (BR-BLK) BRONZED BRASS (BR-BRZ)
LED LIFESPAN	50,000 HRS	WEIGHT	6KG / 13.2LB (PENDANT) 5KG / 11LB (TABLE LAMP)
CONTROL	THE SOLACE TABLE LAMP COMES SUPPLIED WITH A IN-LINE PUSH DIMMER SWITCH. DIMMING RANGE 10 - 100%	PACKAGING	L 360 W 360 H 550 / L 26" W 26" H 34"(PENDANT + TABLE LAMP)
IP RATING	IP20 - FOR INDOOR USE ONLY	PACKAGING WEIGHT	7KG / 15.5LB (PENDANT) 6KG / 13LB (TABLE LAMP)
CERTIFICATION	AU/NZ AS/NZS 60598.1, 60598.2.1 EU EN 60598.1, 60598.2.1 US/CAN ETL/UL CERTIFICATION PENDING		





ROSS GARDAM

PHOTOGRAPHY BY HAYDN CATTACH - HAYDNCATTACH.COM

COLOUR AND SWATCHES SHOWN IN THIS DOCUMENT ARE FOR REFERENCE ONLY AND MAY DIFFER IN ACTUALITY.

COPYRIGHT ©2025 ROSS GARDAM PTY LTD. ALL CONCEPTS, PHOTOGRAPHY AND IDEAS CONTAINED WITHIN THIS DOCUMENT ARE PRIVATE AND CONFIDENTIAL. THEY MUST NOT BE REPRODUCED IN ANY WAY OR FORM AND REMAIN THE INTELLECTUAL PROPERTY OF ROSS GARDAM. ALL PRODUCTS ARE REGISTERED DESIGNS WITH IP AUSTRALIA.