

Bankston

Sans-Arc



Super Collection

*by*

SANS-ARC



Matya Marovich, Director, Sans-Arc Studio

## Super Collection

*by*

### SANS-ARC

Sans-Arc Studio is an award-winning design and architecture firm renowned for creating human-oriented spaces full of wonder and excitement that sit firmly outside of the norm. In partnership with Bankston, a leading manufacturer of luxury architectural hardware, they have co-created a limited-edition collection of bold door hardware that celebrates the joy in the unexpected.

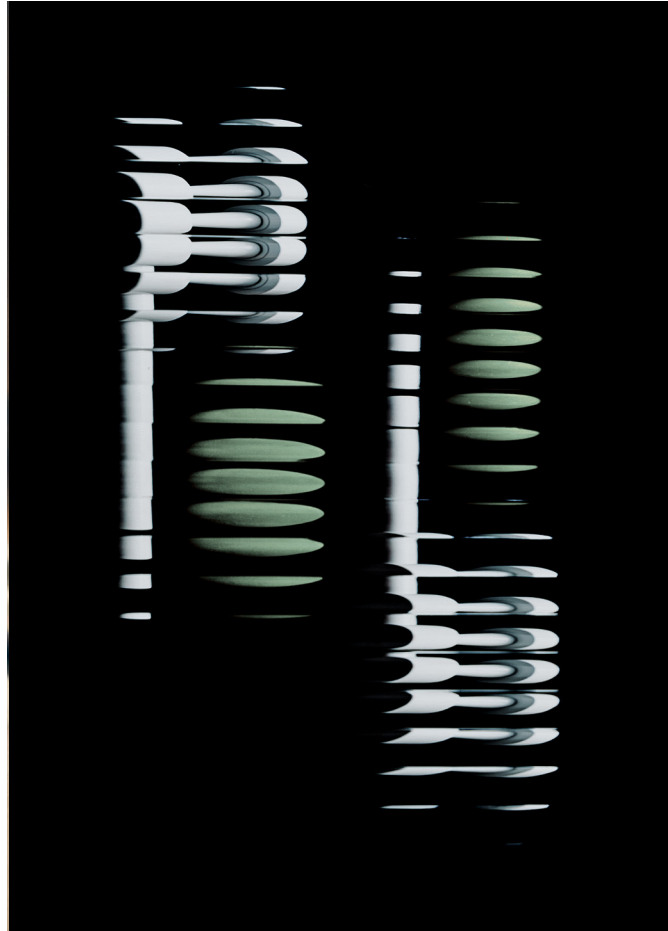
Super Collection by Bankston Sans-Arc largely draws inspiration from the Radical Design Movement of the 1960s, a period that heralded a new way of thinking, encouraging daring explorations of shape, colour and material. Bankston approached Sans-Arc with a simple brief; design a range of unique products that break the mould and reflect the essence of their practice. Sans-Arc have imbued their playful, referential, and off-beat style into every product in the Super Collection.

Drawing from different scales of design and objects of human interaction, the creative process centred around the themes of shape, geometry, and contrast. The final collection reflects a consistent design language, one that values and embraces irregularity. The eclectic approach taken by Sans-Arc leaves each design with its own unique story to tell.

Once the product designs were finalised, rigorous testing was employed to guarantee the functionality of the collection. With equal care taken in conceptual design, to final application, the Super Collection has been highly considered at every step of the process.







## Finishes



### Brushed Champagne\*

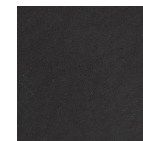
Brushed Champagne, with its satin sheen and rich hue, accentuates the understated luxury of raw brass. Ideal for modern and minimalist spaces, it delivers a distinctive warm gold tone that enriches without overwhelming. Brushed Champagne is finished to create a fine texture then sealed with a clear protective lacquer. Considered a sensitive finish, it will wear when exposed to the elements.

*\*Only available in Australia and New Zealand.*



### Champagne PVD

Champagne PVD combines resilience with a contemporary edge, suitable for both interior and exterior applications. Designed to withstand coastal elements and humidity, its endurance is assured with a lifetime corrosion warranty. The tone, a nuanced soft gold, offers a modern alternative to classic gold, enhancing environments with a warm, luxurious glow.



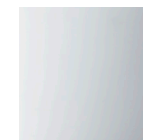
### Nero

Nero's deep matte-black tone is the epitome of boldness, offering a modern and striking statement. Curated to be the perfect non-reflective black with a smooth surface, Nero can deliver contrast to light interiors and a sophisticated harmony within darker schemes. Constructed from solid brass with a durable UV stabilised powder coating, it ensures longevity and style.



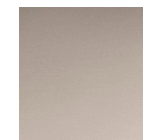
### Neutralis

Neutralis articulates a cool white in a semi-gloss finish, providing a versatile design element. It can complement a minimalist aesthetic or boldly stand out against vibrant surfaces. This finish, crafted from solid brass and sealed with a durable powder coat, represents both clean sophistication and a conscious design decision.



### Polished Chrome

Polished Chrome brings a radiant silver hue to interiors, capturing and reflecting light to add movement. It is a highly lustrous finish, perfected through a plating process on solid forged brass, which not only fortifies the material but also adds radiance to its tone. Durable and distinctive, it serves as a stark yet cool-to-the-touch accent.



### Smooth Nickel

With a warm radiance and silver lustre, Smooth Nickel possesses a subtle appearance and texture. It refracts light uniquely, creating a muted glimmer that accentuates the contours of its form. Possessing a sophisticated and understated tone, it makes the perfect accent for many interior styles. Finishing nickel-plated brass yields a soft texture, rendering this finish durable, and versatile.



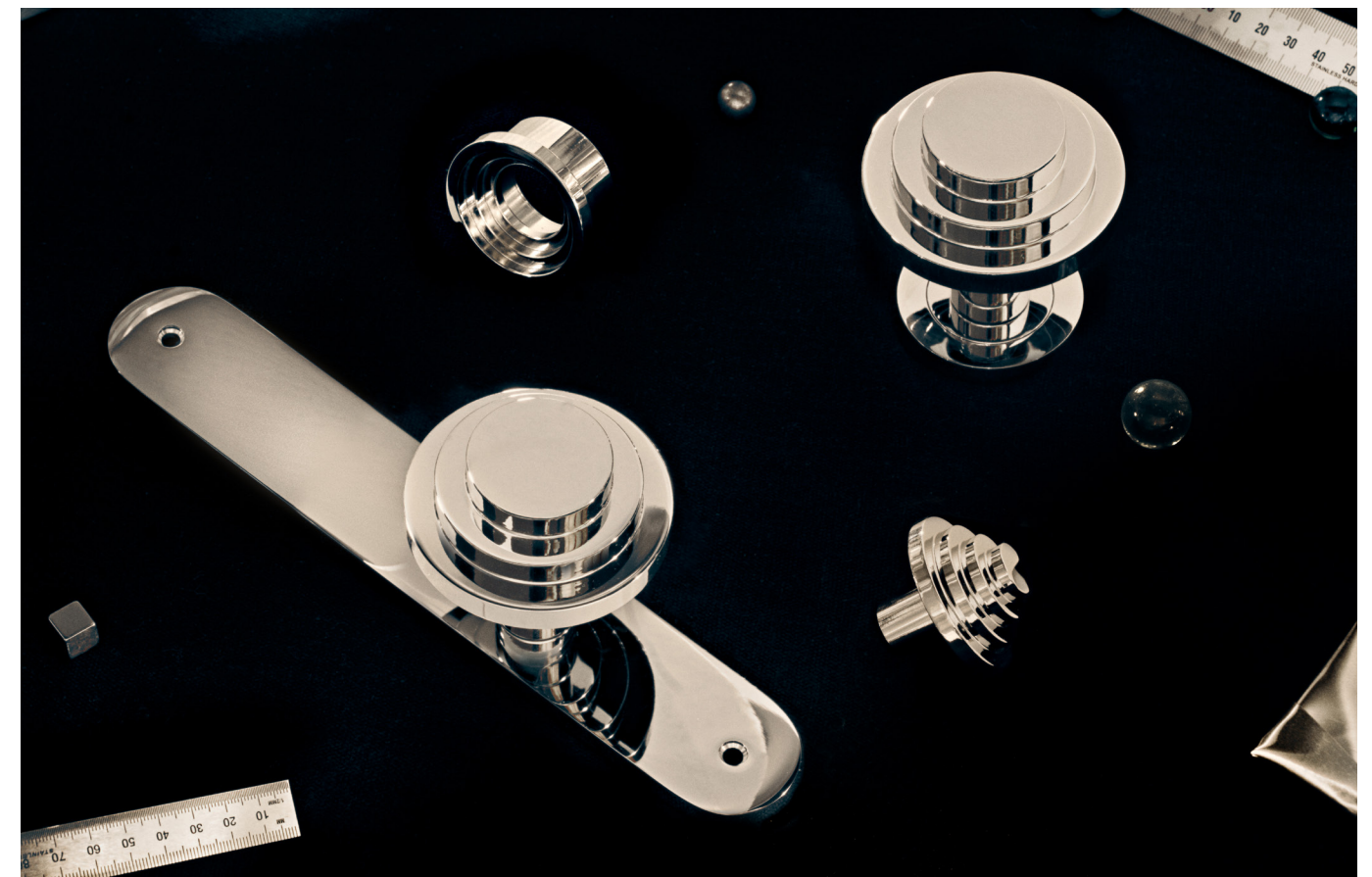


## Zzzigurat

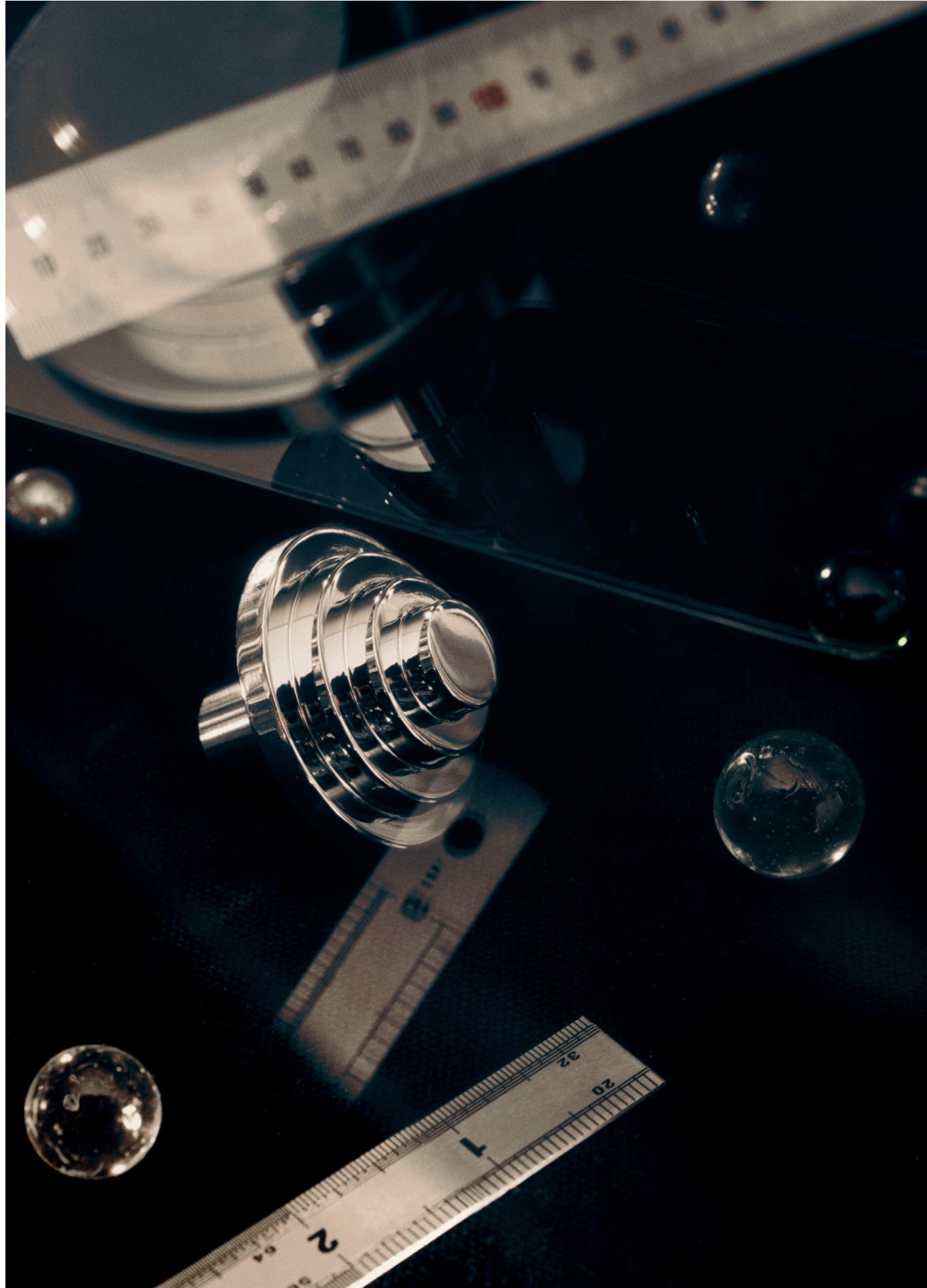
The Zzzigurat draws its distinctive shape from the ancient Mesopotamian ziggurat, a stepped structure that pre-dates the pyramids of Egypt. The name also pays homage to one of the key design practices (Zzigurat) associated with the Radical Design Movement. The bold shape of the Zzzigurat makes it ideal for more playful and animated spaces.



Explore more





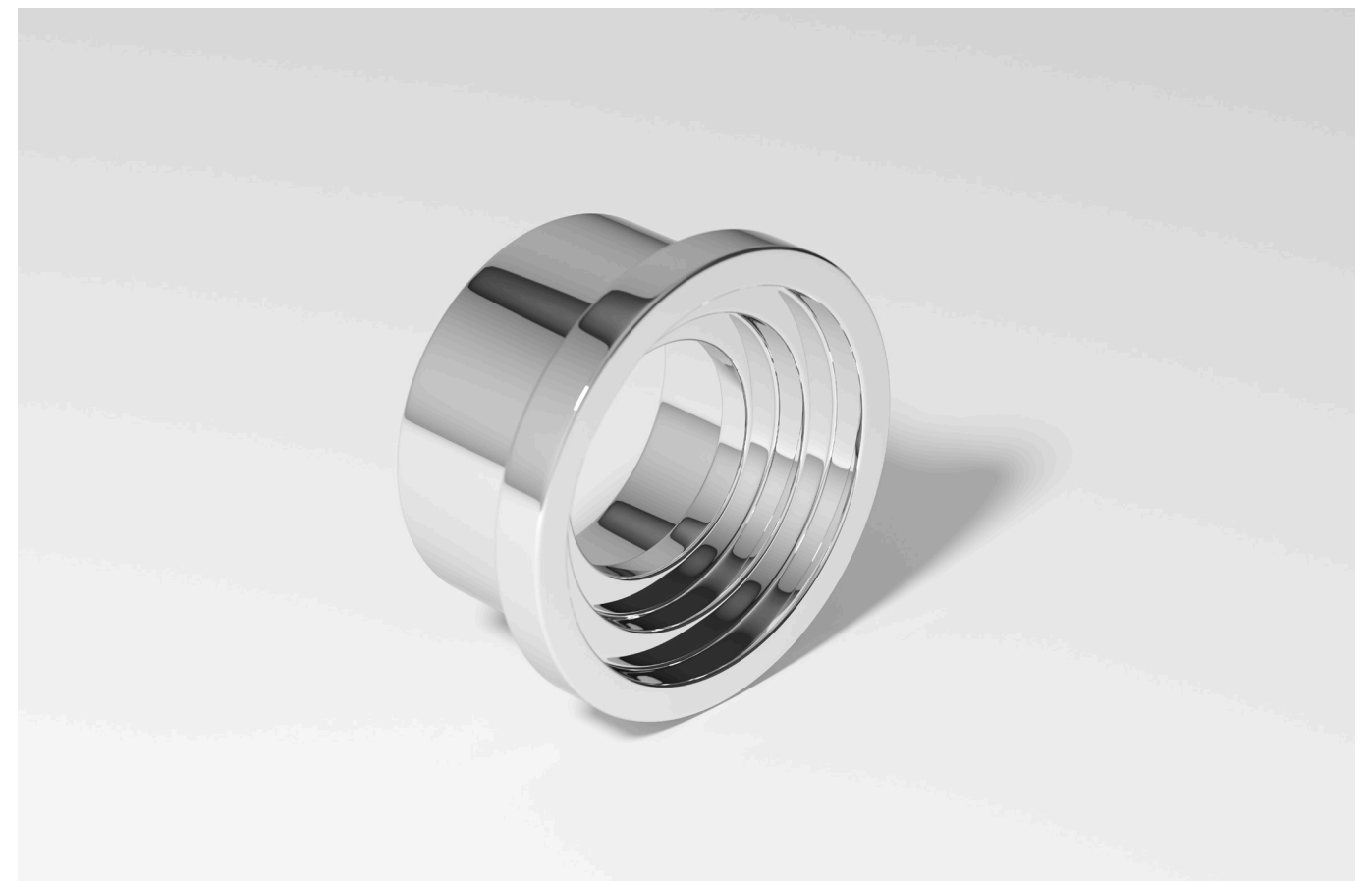


## Zzzigurat Cupboard Knob NEW

The Zzzigurat Cupboard Knob continues the bold form of the collection, drawing its distinctive shape from the ancient Mesopotamian ziggurat—a stepped structure that predates the pyramids of Egypt. Ideal for joinery throughout a project, it adds a refined yet playful, geometric element.

## Zzzigurat Cabinet Pull NEW

Inspired by the bold geometry of the ancient Mesopotamian ziggurat—a stepped structure that predates the pyramids of Egypt, the Zzzigurat Cabinet Pull reinterprets the Ziggurat design in an inverted form, drawing the eye into the recessed detailing. Its smooth edges and minimalist yet striking silhouette make it a playful art piece for joinery.





# Geppetto

The Geppetto, named after the lever's Pinocchio like shape, is subtly linked to the Italian theme of radical design, whilst embracing a slightly absurdist design approach. Playing off contrasting geometries, the Geppetto's simple form is bold yet timeless.



Explore more







Futurismo

Inspired by Futurist design, the Futurismo is geometrically subversive and introduces quite unexpected shapes into a lever. A sphere and chamfered rod are elegantly stacked to create a unique and eye-catching piece.



[Explore more](#)





## Futurismo Return Lever NEW

The Futurismo Return Lever takes the original design’s bold, geometric lines and introduces a second sphere at the culmination of the cylindrical rod, allowing for visual symmetry, yet unexpected contrast in proportions. Now engineered for accessibility, this lever ensures it is intuitive and functional for people with disabilities, while retaining its approach to geometric form and broadening its application to commercial and hospitality spaces. The Futurismo Return Lever is a testament to our vision for accessibility access to be functional, without compromising design integrity.

## Futurismo Pull NEW

The Futurismo Pull combines geometric precision with 20th-century Futurist design. Its lengthened cylindrical form echoes the bold, subversive lines of the Futurismo Lever, with an unexpected sphere adding contrast and balance. This statement pull extends the application of the Futurismo Collection to the front entry or appliance applications, allowing for a unified presence across projects.



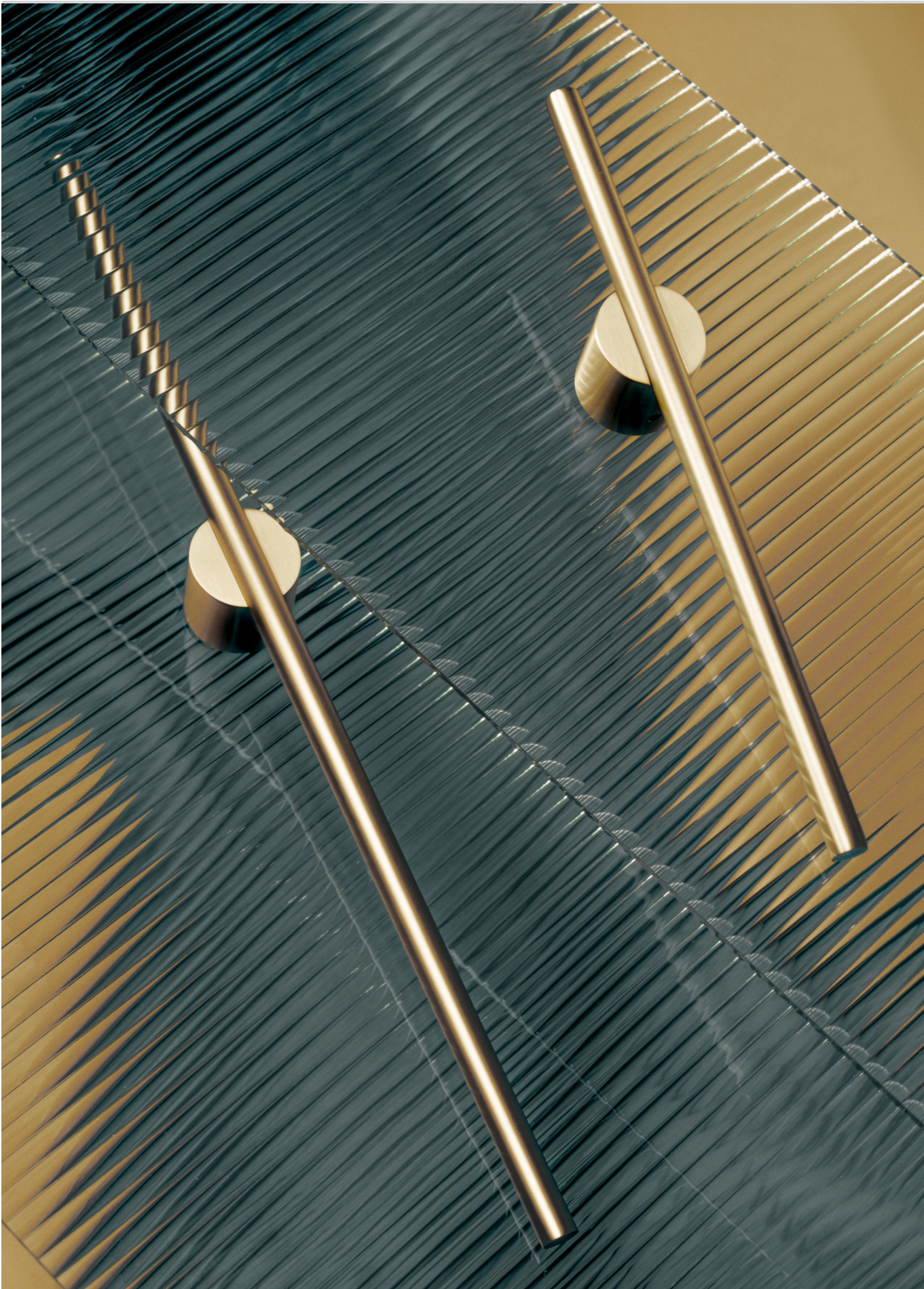


# Associati

Slightly more serious in approach, yet still imaginative. With the elements stripped back and reduced to only what is needed, the Associati is simple, minimalist – a line and a dot.



Explore more







# Super Moon

Super Moon is named after its shape; it is round – like the moon, and big, so super! Super Moon celebrates the inherent beauty and simplicity of shape, exhibiting strength and assurance with every engagement. Ideal for the front doors of your suburban Chinese restaurant, marble hall mausoleum or modernist suburban home.



[Explore more](#)





