

Bankston

YSG



The Streaks

by

YSG



Yasmine Ghoniem - Director YSG.

The Streaks

A force of nature, The Streaks is a range of sculpted architectural hardware designed by the Sydney-based interior design and architectural studio, YSG, in partnership with Bankston. Demonstrating both the beauty, dexterity and strength of timber, the spirited ensemble of door levers, pulls and joinery pieces featuring stripes in contrasting tones and playful experimentations in scale is superbly crafted from species that span the globe. Inspired by natural ribbons of grain, the banded motif makes for bold entry statements to every room. Amongst all, aesthetics, ergonomics, and originality are equally considered, with a niche selection cast in bronze.

The range can be likened to lead and support acts that together form a formidable ensemble. Its collective title explores interpretations of the term 'streak' – from a literal sense (a line or mark of a different substance or colour from its background) to emotive associations as they can define specific characteristics of someone's personality (such as 'winning streak'). There is also the act of streaking: to run naked through a public area. Pure in form, the larger striped levers and pulls with their bold angled poise are the attention seekers.

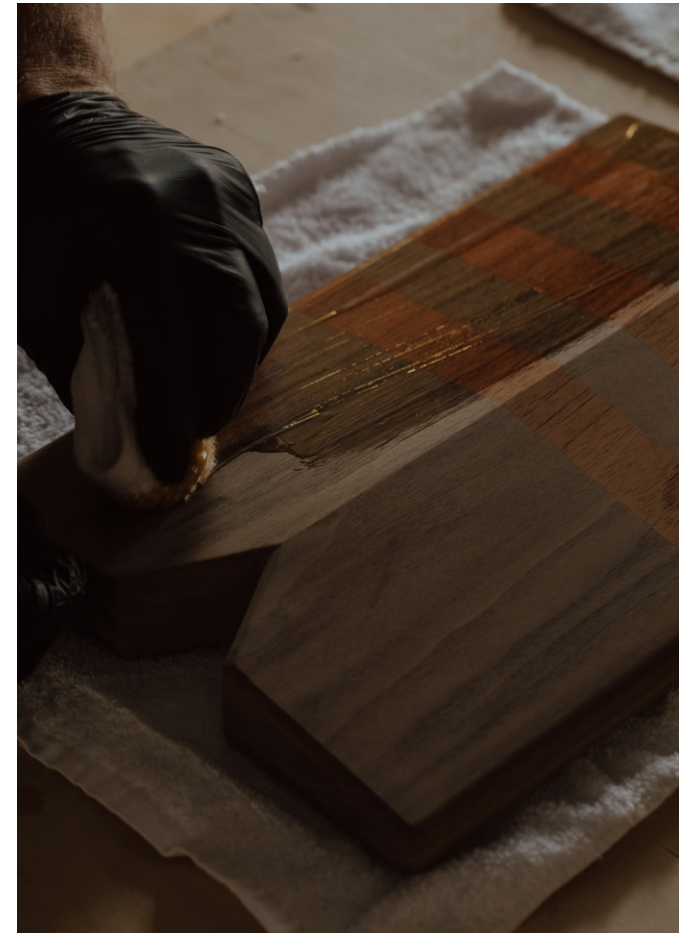
Crafted Impressions

Registering the sensorial importance of human touch (and first impressions), the tactile pieces welcome smooth and warm sensations upon contact.

Tonal timber pairings range in intensity from more subtle striped combinations (American White Ash with Australian Blackbutt) to distinctive bands (American Walnut plus Australian Red Cedar), with the addition of a couplet of striking New Zealand Purpleheart and the tangerine tones of African Padauk.

Each timber piece is a testament to Australian-made artisanal craftsmanship and will intensify tonally thanks to natural oils working their magic. Meticulously crafted from FSC-certified timber, these pieces reflect our commitment to sustainable and responsible forestry management.

The collection's bronze versions are hand sand-cast, the process leaving the pieces with distinctive pitting and pour marks. The Patinated Bronze finish instantly grants it an aged hue, with touch points continuing to alchemise over time to rich golden glows.





The Collection

The collection is loosely divided into three groups, with the ability to mix and match the pieces and select from the different timber banding combinations, perhaps also adding a bronze piece to alchemise the selection as there are no rules regarding pairings.

The hit makers feature the strongest banded markings, hence the re-enforcement of the term 'streak' in their names: The Straight Streaker lever (a play on the term 'straight shooter' given its horizontal plane and practical shape); the attention seeking Kooky Streaker lever (named after it's off-kilter, tilted design and elongated scale); the Closet Streaker cabinet pulls (flashy show ponies given their banding) whose name plays on their confidence when put to use; and the Sensible Streaker door pull. Straight up and down, its vertical alignment is super practical to attach to concealed refrigerator doors through to pantry cupboards and bedroom wardrobes. The Straight Streaker and Sensible Streaker are also available in Patinated Bronze for both internal and external use.

Secondly, chunky in stature, are the aptly named Wide Guy and the slender version, Slim Jim door pulls.

These pulls feature a profile that rises to an angled peak with a triangular cut-out subtly relieving mass at their base. Wide Guy is available in banded timber, while Slim Jim (offered in two smaller versions) is available exclusively in Patinated Bronze.

The third group features figurative support acts named after character traits and streaks of movement.

Lunacy, a sliding door pull shaped like a crescent moon, alludes to a 'crazy streak' drawing on the belief that the moon has the power to drive people to madness. Flash, offering a sliding door privacy function with its spark-like expression, punctuates a moment in time, while Narcissist, a star-shaped joinery knob offered exclusively in Patinated Bronze, is drawn from an ancient Egyptian motif and alludes to a 'diva streak'.

Timber Species

Collaborating with local Australian master woodworkers, the timber pieces in The Streaks collection are meticulously crafted from FSC-certified timber, ensuring responsible forestry management. These products adhere to the highest possible environmental standards, from the moment the timber is sourced from plantations to our manufacturing and packaging processes.



Australian Red Cedar

Possessing a rich red to reddish-brown colour and natural lustre, Australian Red Cedar is a premium timber with a relatively straight grain that can appear interlocked. A highly prized, sustainably sourced timber, it is reclaimed and upcycled from fallen trees. As a softwood, it is a favoured timber for premium woodworking – from decorative applications to fine furnishings. Highly sought after given its resemblance to Mahogany, its tones often deepen with age.



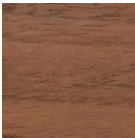
American White Ash

Comprising a pale cream tone, American White Ash provides a striking contrast to darker timbers. Its grain pattern is typically straight and can occasionally exhibit subtle waves. Due to its strong composure, its hardness ensures resilience, while its mild elasticity grants shock resistance, making this hardwood a staple timber to craft interior furniture and architectural applications. Over time, the timber may darken slightly.



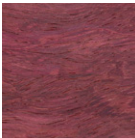
Australian Blackbutt

Ranging from a pale brown to golden honey, sometimes with subtle pinkish hues, Australian Blackbutt is a premium hardwood that typically possesses a straight grain, however, can occasionally exhibit an interlocked grain pattern. This distinctive timber can reveal signature darker gum veins, a natural feature of the timber, adding character and unique focal points. Given its strength and durability, this species is used for furniture and architectural applications. Over time, the timber’s tones can deepen. Australian Blackbutt is highly valued for fast maturity and regenerative properties.



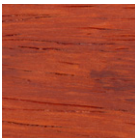
American Walnut

Prized for its rich chocolate brown tones with occasional lighter streaks, American Walnut typically features a straight grain, but it can exhibit curly, wavy, or figured patterns such as burl, crotch, and quilted effects. Revered for its smooth, dark elegance and durability, it is considered a superior hardwood and is used to create premium furniture, plus cabinetry and interior wall panelling elements given its dense, natural warmth. This timber naturally deepens in tone over time.



New Zealand Purpleheart

Instantly recognised for its vibrant purple hue, New Zealand Purpleheart possesses a typically straight grain that can sometimes appear wavy, plus a natural lustre that can become glossy after polishing. Used for furniture making and crafting fine objects due to its striking colour, New Zealand Purpleheart is an extremely dense and durable hardwood. This timber naturally deepens in tone over time.



African Padauk

Native to Central and West Africa, African Padauk is a highly revered exotic hardwood with a vivid reddish-orange to deep red hue. Its grain is typically straight, with ribbon-like bands of varied width possessing variations of rich tone. A symbol of prestige in some African societies, it was associated with royalty and spiritual significance, often used in important artifacts. Valued in luxury woodworking to create both decorative inlays and solid furniture pieces, it is also used for specialty flooring given its durable strength. This timber naturally deepens in tone over time.





Finishes & Materials

Tonal timber pairings offer varying levels of contrast, from the subtle stripes of the Light Band, to the more distinctive Dark Band pairing, or for bolder designs, the striking Colour Band combination. The striped motif draws upon YSG’s experimentations with mis-matched timber species to create jigsaw-like attachments upon joinery surfaces across their projects. Appealing to the eye, the banded combination enhances connections.

Each timber piece is a testament to artisanal Australian-made craftsmanship and will intensify in tone thanks to natural oils working their magic. Hand-finished with a hard wax oil applied with a dry cloth, the surfaces display a low lustre matte finish. A niche selection of The Streaks collection is also cast in bronze.



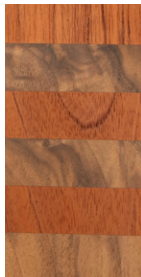
Light Band

Pairing gentle cream bands of American White Ash with golden honey bands of Australian Blackbutt, this neutral timber combination makes for refined entry statements to every room and enlivens joinery surfaces with dynamic expression.



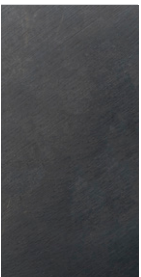
Colour Band

Pairing distinctive vibrant purple bands of New Zealand Purpleheart with vivid reddish-orange tones of African Padauk, this intrepid timber combination makes for intriguing entry statements to every room and enlivens joinery surfaces with adventurous expression.



Dark Band

Pairing premium rich chocolate-hued bands of American Walnut with lustrous reddish-brown bands of Australian Red Cedar, this bold timber combination makes for striking entry statements to every room and enlivens joinery surfaces with confident expression.



Patinated Bronze

For the Patinated Bronze finish, bronze is hand sand-cast, resulting in natural pitting and pour marks that enhance the unique character of each piece. An oil rubbing of the existing bronze gives an aged appearance, darkening the vibrant bronze colour into a rich hue. This finish will wear over time to expose the golden bronze underneath and will feature lighter areas at points of contact where the bronze has been rubbed back to a golden tone.

Note: The Streaks Patinated Bronze pieces are suitable for internal and external use. Bankston does not recommend timber finishes for external applications.



Straight Streaker, 1. Dark Band 2. Colour Band 3. Light Band.

Straight Streaker

Like its name suggests, this universal lever plays on the term ‘straight shooter’ given its easy-to-grab horizontal plane. Superbly crafted from solid timber species that span the globe, it is offered in three different striped colourways. Contrasting natural tones range in intensity from deep brown paired with blonde or an earthy red shade, to more vibrant bands marrying rich aubergine and tangerine for bolder entry statements. Smooth and warm upon contact, its subtly curved edges elevate every door it adorns. Also available in Patinated Bronze, along with a Return version for hospitality and commercial purposes, the bronze touch points will continue to alchemise over time to rich golden shades. Patinated Bronze pieces are suitable for internal and external use.



[Explore more](#)

Kooky Streaker

This attention seeking timber lever is named after its off-kilter, tilted design and elongated scale. Creatively, it shifts perceptions of a door's purpose. Rather than nonchalantly entering and exiting a room, it was designed to make people feel that they were in-between spaces and walking into something special when they draw down upon the lever. The suspenseful sensation can be likened to opening a vault (hence its 45-degree orientation). In its closed position it also provides a more interesting profile than a typical vertical or horizontal handle. Designed for internal use and offered in three different contrasting banded timber colourway combinations (all crafted from solid timber in natural shades found amongst assorted species), its playful 'easy grab' nature makes it a standout feature.



Explore more



Sensible Streaker

With its no nonsense, straight up and down stature, the vertical alignment of this elongated pull makes it a highly versatile household addition. Suitable for doors and concealed appliances, as well as a range of joinery surfaces – from bedroom wardrobes to pantries and linen cupboards, it can also be installed horizontally. Its striking striped timber banding feature (offered in three striking tonal combinations) adds an energetic statement to any surface it adorns, also making it a winner in hospitality settings plus workplaces that appreciate bold thinking. Also available in Patinated Bronze, for both internal and external use, it adds an instantly settled golden sheen to the spaces it inhabits thanks to its key touch points glowing over time.



Explore more



Sensible Streaker, Colour Band.

Wide Guy

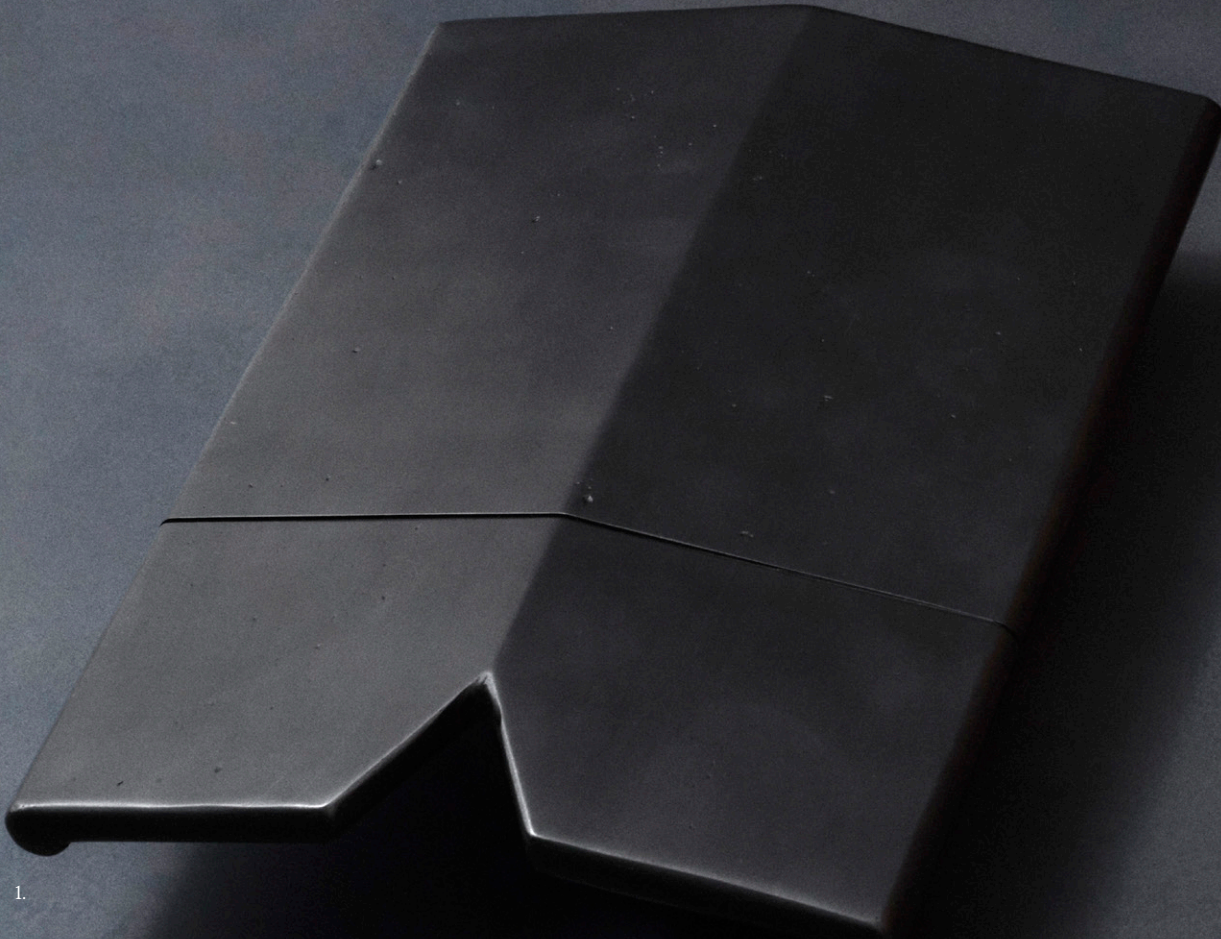
Cheekily named after its tubby stature, you can literally feel the solid assurance of this handsome solid timber door pull's integrity in your hands. Its engaging chunky rectangular form features a profile that rises to an angled peak with a triangular cut-out subtly relieving mass at its base. Demonstrating the dexterity, strength and tonal beauty of solid timber, it is offered in three different striped colourways. Contrasting natural tones range in intensity from deep brown paired with blonde or an earthy red shade, to more vibrant bands marrying rich aubergine and tangerine that will deepen tonally over time thanks to their natural oils working their magic. Designed for internal use, the chunky streaks make this bold character an ideal addition to residences through to boutique hotels, plus bars and restaurants.



Explore more



Wide Guy, 1. Dark Band, 2. Light Band, 3. Colour Band.



1.



Slim Jim

This character is a slender version of the Wide Guy door pull. Cast exclusively in bronze, it features a profile that rises to an angled peak with a triangular cut-out subtly relieving mass at its base. The hand sand-casting process leaves it with distinctive pitting and pour marks. Its patinated finish instantly grants it an aged hue, with its touch points continuing to alchemise over time to rich golden glows. Suitable both indoors and out, it cuts a more versatile figure than the Wide Guy given its narrower width, making it a more versatile statement piece for any door. Available in two sizes, small and large.



Explore more





Closet Streaker, 1. Size 320mm CTC, 2. Size 256mm CTC, 3. Size 160mm CTC, Colour Band.

Closet Streaker

Super versatile, these flashy show ponies are named after their confident banding pattern. The solid handles are superbly hand crafted in Australia from timber species that span the globe and are offered in three striped colourways in contrasting natural tones inspired by ribbons of woodgrain. They range in intensity from deep brown paired with blonde or an earthy red shade, to more vibrant bands marrying rich aubergine and tangerine for bolder statements and will deepen tonally over time thanks to their natural oils working their magic. Offered in three sizes, they can attach to cupboard or drawer surfaces either vertically or horizontally. Smooth to the touch, they are an easy grab upon surfaces that invite constant interaction.



Explore more

Lunacy Sliding Door Pull

Set within a circular fixture, this sliding door pull is inset with a crescent moon, enabling fingers to snugly grasp its internal concave edge. Named after a streak of craziness, it alludes to the belief that the moon has the power to drive people to lunacy. Perfectly suited to pocket doors, it instantly animates any surface it adorns. Superbly crafted from solid timber species that span the globe, it is offered in three different striped colourways of contrasting natural tones that range in intensity from deep brown paired with blonde or an earthy red shade to more vibrant bands marrying rich aubergine and tangerine.



Explore more

Edge Pull

Sitting flush along the edge of a sliding door, the Edge Pull enables ease of control when opening a sliding door that sits within a cavity. Featuring a unique pairing of triangular shapes, the single recessed triangle encourages the fingers to pull. A Patinated Bronze finish grants this durable fixture a rich hue.



Explore more

Flash Sliding Door Privacy Kit

With its bold star-like expression, this sliding door privacy function captures a moment in time when it moves through space like a flash in the sky. Cast in solid bronze, it is set within three different circular timber enclosures: rich American Walnut or American White Ash timber for classic appeal, plus the vibrant tangerine shade of African Padauk for a more adventurous statement. The Flash comes with everything you need to make it work, including a matching Patinated Bronze edge pull, latch, faceplate and striker. Like a glimmering jewel that catches the eye, it sparks enquiry and invites interaction. What lies beyond the surface it adorns? While all pieces in this range are designed to mix and match, for those after lunar alignment, it pairs perfectly with the other galactic door levers and sliding door pulls.



Explore more



Lunacy Sliding Door Pull, 1. Light Band, 2. Colour Band, 3. Dark Band.



Streaker Privacy Turn, 1. Patinated Bronze, 2. Dark Band, 3. Light Band, 4. Narcissist Cupboard Knob, Patinated Bronze.

Narcissist Cupboard Knob

With its raised star-shaped surface making it an easy grab, this joinery pull offered exclusively in Patinated Bronze, radiates a ‘diva streak’ given its glowing spark of confidence. Drawn from an ancient Egyptian motif, the star shape is often referenced throughout YSG’s work. Offered in two sizes, it is best suited to kitchen or bathroom drawers through to bedside consoles and wardrobe surfaces. Beyond the home, they instantly elevate hotel suites through to restaurant joinery.



Explore more

Accessibility Privacy Turn

The Accessibility Privacy Turn offers a secure solution for interior door locking. Cast from solid bronze, the turn is available with roses in three timber finishes, seamlessly pairing with the Straight Streaker Return Lever in The Streaks collection. Engineered for ease of use, it is intuitive and functional for people with disabilities, making it suitable for hospitality or commercial projects.



Explore more

Streaker Privacy Turn

Usually a feature designed to discreetly blend into a door surface, this spherical internal locking device exudes a whimsical strength, like the dot to a door handle’s exclamation mark that invites engagement. Demonstrating the tonal beauty of natural timber, it comprises of striking striped banding and is offered in three colourways. Contrasting colours range from deep brown paired with blonde or an earthy red shade to more vibrant bands marrying rich aubergine and tangerine, complementing the range’s door levers and sliding door pulls. It is also available in Patinated Bronze, offering a richly gilded shimmer upon its surface.



Explore more

Escutcheon

A classic design with high versatility, available in four different finishes, the Escutcheon can be paired with any lever on rose in The Streaks collection. The Escutcheon can also be custom cut to suit most cylinder profiles, adapting to any setting. Sold as a pair.



Explore more



bankston.com
@bankston_architectural

Bankston Australia
14-16 Stepney Street
Stepney, South Australia 5069
P. +61 (0)8 8362 1133
E. info@bankstonarchitectural.com.au

Bankston New Zealand
P. +64 (0)6 359 0008
E. info@bankstonarchitectural.co.nz

Bankston International
E. info@bankston.com