

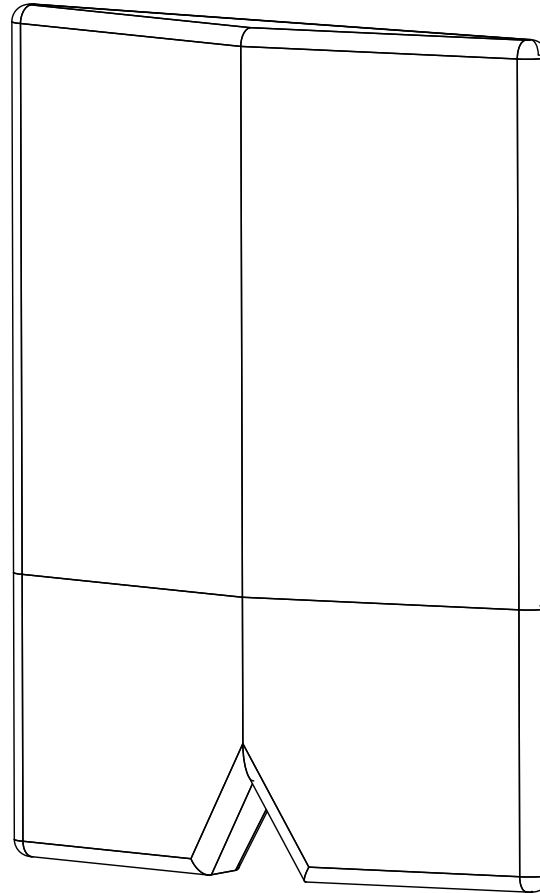
Slim Jim Pull Handle

Small L5 ²⁹/₃₂ x W4 ¹¹/₃₂ x P1 ¹³/₁₆ CTC1 ³¹/₃₂"
L150 x W110 x P46mm CTC50mm

Large L9 ⁷/₁₆ x W7 ¹/₁₆ x P2 ⁵/₁₆ CTC3 ⁵/₃₂" |
L240 x W180 x P59mm CTC80mm

Install Instructions

Bankston
YSG



Finishes &
Materials



FAQs &
Warranty



Resources

bankston.com

@bankston_architectural



Bankston Australia
14-16 Stepney Street
Stepney, South Australia 5069

P. +61 (0)8 8362 1133
E. info@bankstonarchitectural.com.au

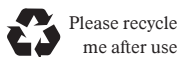
Bankston New Zealand
P. +64 (0)6 359 0008
E. info@bankstonarchitectural.co.nz

Bankston International
E. info@bankston.com

**SDG Trading Pty Ltd trading
as Bankston Architectural**

ACN 008 154 041
ABN 18 008 154 041

*Image used for illustration
purposes only



9 343857 442830

COMP465

1. Mark two vertical pilot holes from the centre of your desired height at (CTC 50mm for small pull) or (CTC80mm for large pull) on one side of the door for face fixing, or both sides of the door for rear fix and back-to-back fixing.
Note: - Allow for the door jamb from edge of pull to edge of door.
2. Unscrew the two grub screws (E) located on each pillar of the pull handle (A) releasing concealed spindles (B).

3. Face Fix

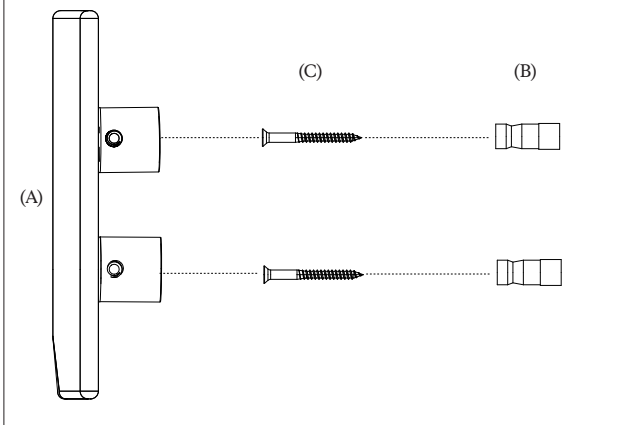
- 3.1 Drill the two pilot hole's part way through the door.
- 3.2 Screw the wood screws (C) through the concealed spindles (B) and into the pilot holes on the door. Figure 1.

Figure 1.



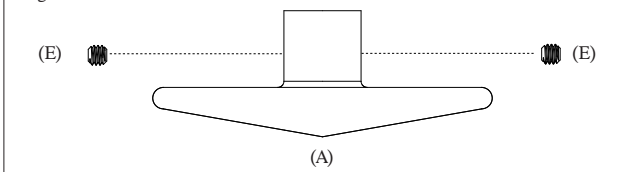
- 3.3 Place the pull handle (A) over the concealed spindles (B) ensuring it is hard up against the door with the v shape cut-out pointing down. Figure 2.

Figure 2.



- 3.4 Secure the pull handle (A) with the two grub screws (E) on each side of the pillars. Figure 3.

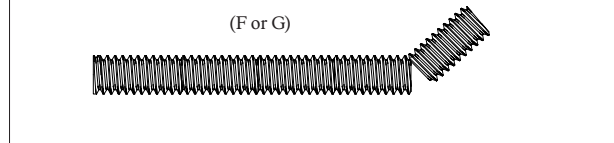
Figure 3.



4. Rear Fix

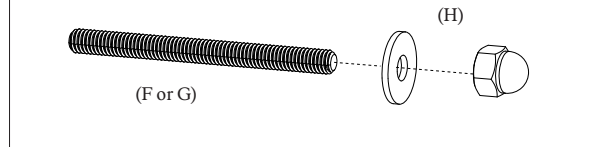
- 4.1 Drill the marked holes through the door with appropriate bit to suit 6mm or 1/4" studs (F or G).
- 4.2 Adjust the length of the stud (F or G) if required to suit the door thickness. Figure 4.
*Approx length is door thickness + 25mm or door thickness + 1".

Figure 4.



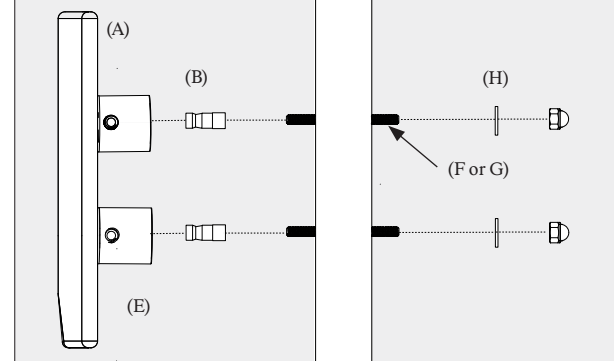
- 4.3 Add the domed nut with washer (H) to one end of stud (F or G). Figure 5.

Figure 5.



- 4.4 From the back of the door push the stud (F or G) with nut & washer (H) through the hole and screw into the concealed spindle (B) until tight for both pillars. Figure 6.

Figure 6.



- 4.5 Repeat steps 3.3 and 3.4 to secure the pull handle (A).

5. Back to Back Fix (two pull handles required)

- 5.1 With the holes drilled as per step 4.1 adjust the length of the stud (F or G) if required to suit the door thickness.
*Approx length is door thickness + 40mm or 1 9/16".
- 5.2 Place the stud (F or G) through the hole in the door and screw the concealed spindles (B) onto stud (F or G) from both sides of the door until tight. Figure 7.
- 5.3 Repeat step 3.3 and 3.4 to secure both pull handles (A)
Note:- If fixing to glass doors place the nylon washers (I or J) over the stud (F or G) with the collar into the glass door. Figure 8.

Figure 7.

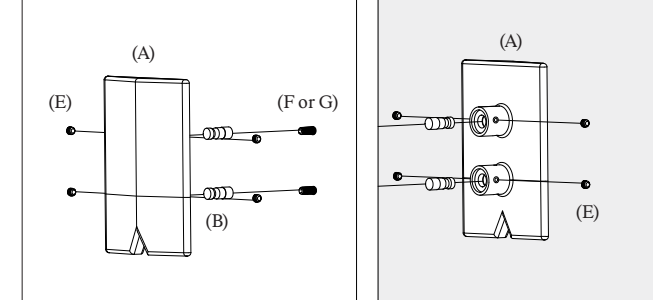
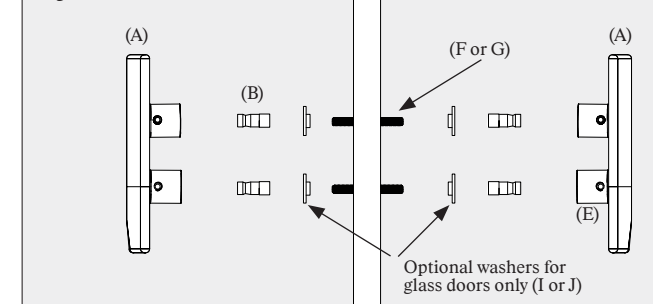


Figure 8.



Included

- (A) Pull handle x 1
- (B) Concealed fix spindle x 2
- (C) Phillips head screws L45mm x 3
- (D) Allen key 2.5mm x 1
- (E) Grub screw M5 x 5
- (F) Threaded stud L70mm x 2
- (G) Threaded stud L120mm x 2
- (H) Domed head nut M6 & washer x 2
- (I) Nylon washer OD9mm x 2
- (J) Nylon washer OD11mm x 2

