

ANTICA II

ANTICA SCONCE | A pre-Hispanic smithing tradition thrives by recycling copper scraps into contemporary lighting fixtures. Originally copper was mined by indigenous people to elaborate masks, chains and other objects as an offering to the Tarascan gods.

W: 25cm, D: 41cm, H: 45.5cm
W: 1", D: 15 ¾", H: 18"
Shade: 25cm | 10" diam

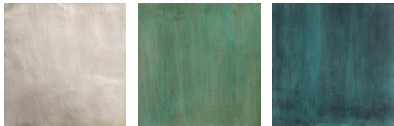
Copper.

Finishes available: Silver, Sage, Teal.
Shown in images: Copper in Silver.

Lamping:
1 x E12 socket
25W G12 ½ frosted incandescent bulb
Cable, socket, dimmer plug are cULus listed
Voltage: 110/120v

Lead time: 8 - 10 weeks

FINISHES:



Silver

Sage

Teal

Handcrafted in Mexico.

Please note: Products may vary slightly in design, texture, and finishing, showcasing the artisanal handcrafted work.

